

# FX AWARDS 2023: JUDGES

Our new panel of judges for 2024 will be posted here later.



**Adrian Norman**  
**Head of Design, Morgan Lovell**  
Adrian has been designing transformative office interiors for over 25 years and heads the regional design team at Morgan Lovell, a leading design and fit-out specialist.  
[morganlovell.com](http://morganlovell.com)



**Alex McCuaig**  
**Owner and Creative Director, ACM Design Consultancy**  
Alex is the ex-owner and CEO of MET Studio Design and is now the owner and CEO of his new company ACM Design Consultancy. In 2016 he was the FX Awards winner of Outstanding Lifetime Contribution to Design.



**Beatriz Gonzalez**  
**Director, Head of Workplace Interiors, Scott Brownrigg**  
Beatriz heads the workplace interiors design team at Scott Brownrigg. As director, she oversees all workplace interiors projects focusing on employee experience, wellbeing and sustainable design.  
[scottbrownrigg.com](http://scottbrownrigg.com)



**Brendan Heath**  
**Director of Hospitality & Commercial Interiors, SHH Architects**  
SHH provides cross-sector architecture, interior architecture, and interior design services. Brendan is the director responsible for overseeing the company's non-residential projects.  
[shh.co.uk](http://shh.co.uk)



**David Archer**  
**Director of Archer Humphryes Architects**  
Since being established in 2002, Archer Humphryes has built a global reputation for the design and delivery of hospitality and arts projects across the globe.  
[archerhumphryes.com](http://archerhumphryes.com)



**David Clements**  
**Chief Executive, FUTURE Designs**  
FUTURE Designs, founded 32 years ago by current chief executive David Clements, is an international British lighting designer and manufacturer which supplies office lighting systems to UK Europe UAE and USA.  
[futuredesigns.co.uk](http://futuredesigns.co.uk)



**David Galullo**  
**CEO and Chief Creative Officer, Rapt Studio**  
David is CEO and Chief Creative Officer of Rapt Studio, a design practice that creates connected spaces and experiences for some of the world's leading brands.  
[raptstudio.com](http://raptstudio.com)



**David Harte**  
**Co-Head of Interiors, Studio Moren**  
Studio Moren is an award winning interior design and architecture studio based in London. David has been with the Studio for the last decade and co-heads the interiors studio.  
[studiomoren.co.uk](http://studiomoren.co.uk)



**David Maurice**  
**Principal, Strategy & Communication, Wingate Architects**  
With a background in the field of Architecture, Interior Design, Communications and Project Management, David leads the Strategic growth initiatives for the Wingates team across Aotearoa New Zealand.  
[wingatearchitects.com](http://wingatearchitects.com)



**Edward Norman**  
**Design Director, Corstorphine & Wright**  
Edward is a client-facing design director who has led major infrastructure projects in India and North America and designed award winning buildings in the UK.  
[corstorphine-wright.com](http://corstorphine-wright.com)



**Georgina Wood**  
**Creative Director, Studio Clementine**  
Studio Clementine is a London design studio with a commitment to exclusive design, unparalleled craftsmanship and high quality. Georgina curates' interiors tailored to her clients.  
[studioclementine.co.uk](http://studioclementine.co.uk)



**Gill Parker**  
**Consultant**  
With 25 years of experience, Gill is a highly regarded leader in the architectural and design sector. She transformed BDG architecture + design into an internationally recognised and award winning design practice, stepping down from her role earlier this year.



**Jill Entwistle**  
**Editor/Writer**  
Jill Entwistle is an editor and writer specialising in architectural lighting design. She is the author of three books on lighting, including Detail in Contemporary Lighting Design (Laurence King), and the editor of the first BCO (British Council for Offices) Guide to Lighting.



**Jo Love**  
**Interior Design Director, adpxLOVEINTERIORS**  
Jo uses the power of psychology and intuitive design to explore and advise the industry on future of design. With over 25 years of interiors experience including two successful businesses, tv, magazine, podcasts, writing, talks, workshops across various sectors.



**Kate Mason**  
**Principal and Workplace Interiors Lead, Woods Bagot London Studio**  
Kate Mason is a Principal within the Woods Bagot London Studio, leading on all Workplace Interiors for the Europe region.  
[woodsbagot.com](http://woodsbagot.com)



**Keith Priest**  
**Founding Partner, Fletcher Priest Architects**  
Founded over 40 years ago, the practice has earned a reputation as trusted advisors to numerous organisations, delivering high quality urban design, architecture, interior design and design research projects.  
[fletcherpriest.com](http://fletcherpriest.com)



**Maria Cheung**  
**Director and Head of Interior Design, Squire and Partners**  
Maria's experience spans workspace, residential and hotel developments and extends to bespoke installations and products, retail displays and exhibition design.  
[squireandpartners.com](http://squireandpartners.com)



**Martin Jepson**  
**Founder, Ergo Real Estate**  
Ergo Real Estate focuses on value-add investment and development opportunities in London and the major cities of the UK.  
[ergo-re.com](http://ergo-re.com)



**Matt Watts**  
**Managing Director, LABS**  
Matt is Managing Director at LABS, one of London's leading flexible workspace brands with a mission to create design-led office environments that feed productivity and support success.  
[labs.com](http://labs.com)



**Professor Neil Thomas**  
**Director, Atelier One**  
Neil Thomas is the founder and director of Atelier One, which has built a world-class reputation for ingenuity and innovation in the field of structural engineering.  
[atelierone.com](http://atelierone.com)



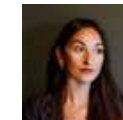
**Neil Tomlinson**  
**Architect/Director, Neil Tomlinson Architects**  
Neil Tomlinson Architects, a 16-year-old practice specialising in masterplanning and transport schemes, as well as retail-led regeneration and residential design.  
[ntarc.co.uk](http://ntarc.co.uk)



**Rachael Flint**  
**Associate, Michael Grubb Studios**  
Michael Grubb Studio is an award-winning lighting design consultancy. Rachael creates innovative and eye-catching lighting designs for high-profile projects across the globe.  
[michaelgrubbstudio.com](http://michaelgrubbstudio.com)



**Rachel Edwards**  
**Workplace Futures Lead, Lendlease**  
Rachel has 15 years experience in workplace strategy. Lendlease brings together expertise in infrastructure, design, planning, development, construction, investments and management to shape cities.  
[lendlease.com](http://lendlease.com)



**Rose Peplow**  
**Head of Interior Design, The Artistry House Interiors**  
Rose is an award-winning interior designer at The Artistry House Interiors, based in the North West. The studio works across commercial hospitality, retail, and residential projects.  
[artistryinteriors.co.uk](http://artistryinteriors.co.uk)



**Sally Storey**  
**Founding Director, Lighting Design International Ltd**  
A For over 30 years Sally Storey has been guiding both John Cullen Lighting and Lighting Design International, of which she is founding director, alongside its talented team of designers.  
[lightingdesigninternational.com](http://lightingdesigninternational.com)



**Vikash Prabhat Patel**  
**Project Director, Lifschutz Davidson Sandilands**  
Vikash is an architect at Lifschutz Davidson Sandilands. He has experience in residential, commercial, and mixed-use projects with a speciality in technical design and a keen interest in the reappropriation of existing buildings.  
[lds-uk.com](http://lds-uk.com)



**Yaara Gooner**  
**Head of architecture and design, LABS**  
Yaara is the creative eye behind LABS's carefully designed spaces. She transforms properties to create hubs of enterprise, designed for wellbeing, productivity and growth.  
[labs.com](http://labs.com)