



**BOOK OF  
WINNERS  
2023**



## THANK YOU TO OUR SPONSORS



## WELCOME



Good evening and welcome to our 25th celebration of your magnificent designs at FX.

We have invited 27 Judges of magnificent experience – the most we have ever had, to judge your entries. And they come from all different specialities, and experience to reflect the

categories tonight. We have judges who are developers, architects, designers, engineers and product designers who have been invited this year because they care as much as I do about these awards.

And for our Outstanding Lifetime Achievement we have Hugh Pearman who has been championing your designs for years in the national press, on televisions, and in magazines worldwide – we've never had a design journalist receive this award before, but they are the unsung heroes in our industry, so it's a great privilege to award FX's highest award to Hugh Pearman. – who has been banging your drum and broadcasting your skills for years!

With so much support from you, as sponsors, as readers, as guests, and as participants in FX and the FX Awards, we have you to thank for this successful night.

Congratulations to all the finalists and indeed the winners. With fierce international competition, If you've won or been shortlisted tonight, you really are world class.

A handwritten signature in black ink that reads 'Theresa'.

Theresa Dowling, Editor FX

JUDGES



**Adrian Norman**  
**Head of Design, Morgan Lovell**  
Adrian has been designing transformative office interiors for over 25 years and heads the regional design team at Morgan Lovell, a leading design and fit-out specialist.  
*morganlovell.com*



**Alex McCuaig**  
**Owner and Creative Director, ACM Design Consultancy**  
Alex is the owner and CEO ACM Design Consultancy. In 2016 he was the FX Awards winner of Outstanding Lifetime Contribution to Design.



**Beatriz Gonzalez**  
**Director, Head of Workplace Interiors, Scott Brownrigg**  
Beatriz heads the workplace interiors design team focusing on employee experience, wellbeing and sustainable design.  
*scottbrownrigg.com*



**Brendan Heath**  
**Director of Hospitality & Commercial Interiors, SHH Architects**  
Brendan is the director responsible for overseeing the company's non-residential projects.  
*shh.co.uk*



**David Archer**  
**Director of Archer Humphryes Architects**  
Archer Humphryes is built upon reputation for the design and delivery of hospitality and arts projects across the globe.  
*archerhumphryes.com*



**David Clements**  
**Chief Executive, FUTURE Designs**  
FUTURE Designs is an international British lighting designer and manufacturer which supplies office lighting systems to UK Europe UAE and USA.  
*futuredesigns.co.uk*



**David Galullo**  
**CEO and Chief Creative Officer, Rapt Studio**  
Rapt Studio is a design practice that creates connected spaces and experiences for some of the world's leading brands.  
*raptstudio.com*



**David Harte**  
**Co-Head of Interiors, Studio Moren**  
Studio Moren is an interior design and architecture studio based in London. David has been with the studio for the last decade and co-heads the interiors studio.  
*studiomoren.co.uk*



**David Maurice**  
**Principal, Strategy & Communication, Wingate Architects**  
David leads the Strategic growth initiatives for the Wingates team across Aotearoa New Zealand.  
*wingatearchitects.com*



**Edward Norman**  
**Design Director, Corstorphine & Wright**  
Edward is a client-facing design director who has designed and led major projects in India, North America and UK.  
*corstorphine-wright.com*



**Georgina Wood**  
**Creative Director, Studio Clementine**  
Studio Clementine is a design studio with a commitment to exclusive design, craftsmanship and quality. Georgina curates interiors tailored to her clients.  
*studioclementine.co.uk*



**Gill Parker**  
**Consultant**  
Gill is a highly regarded leader. She transformed BDG architecture + design into an internationally recognised and award winning design practice, stepping down from her role earlier this year.



**Jill Entwistle**  
**Editor/Writer**  
Jill Entwistle is an editor, writer and author of three books on lighting, including Detail in Contemporary Lighting Design (Laurence King), and the editor of the first BCO Guide to Lighting.



**Jo Love**  
**Interior Design Director, adpxLOVEINTERIORS**  
Jo has over 25 years of interiors experience including two successful businesses, tv, magazine, podcasts, writing, talks and workshops across various sectors.



**Kate Mason**  
**Principal and Workplace Interiors Lead, Woods Bagot London Studio**  
Kate Mason is a Principal within the Woods Bagot London Studio, leading on all Workplace Interiors for the Europe region.  
*woodsbagot.com*



**Keith Priest**  
**Founding Partner, Fletcher Priest Architects**  
The practice has earned a reputation for delivering high quality urban design, architecture, interior design and design research projects.  
*fletcherpriest.com*



**Maria Cheung**  
**Director and Head of Interior Design, Squire and Partners**  
Maria's experience spans workspace, residential, hotel developments, bespoke installations, products, retail displays and exhibition design.  
*squireandpartners.com*



**Martin Jepson**  
**Founder, Ergo Real Estate**  
Martin is founder of Ergo Real Estate, which focuses on value-add investment and development opportunities in London and the major cities of the UK.  
*ergo-re.com*



**Matt Watts**  
**Managing Director, LABS**  
LABS is one of London's leading flexible workspace brands with a mission to create design-led office environments that feed productivity and support success.  
*labs.com*



**Professor Neil Thomas**  
**Director, Atelier One**  
Neil Thomas is the founder and director of Atelier One, which has built a world-class reputation for ingenuity and innovation in the field of structural engineering.  
*atelierone.com*



**Neil Tomlinson**  
**Architect/Director, Neil Tomlinson Architects**  
This 16-year-old practice specialises in masterplanning, transport schemes, retail-led regeneration and residential design.  
*ntarc.co.uk*



**Rachael Flint**  
**Associate, Michael Grubb Studios**  
Michael Grubb Studio is an award-winning lighting design consultancy. Rachael creates innovative lighting designs for high-profile projects across the globe.  
*michaelgrubbstudio.com*



**Rachel Edwards**  
**Workplace Futures Lead, Lendlease**  
Lendlease brings together expertise in infrastructure, design, planning, development, construction, investments and management to shape cities.  
*lendlease.com*



**Rose Peplow**  
**Head of Interior Design, The Artistry House Interiors**  
Rose is an award-winning interior designer. The studio works across commercial hospitality, retail, and residential projects.  
*artistryinteriors.co.uk*



**Sally Storey**  
**Founding Director, Lighting Design International Ltd**  
Sally Storey has been guiding both John Cullen Lighting and Lighting Design International, of which she is founding director.  
*lightingdesigninternational.com*



**Vikash Prabhat Patel**  
**Project Director, Lifschutz Davidson Sandilands**  
Vikash has a speciality in technical design and a keen interest in the reappropriation of existing buildings.  
*lds-uk.com*



**Yaara Gooner**  
**Head of architecture and design, LABS**  
Yaara transforms properties to create hubs of enterprise, designed for wellbeing, productivity and growth.  
*labs.com*

**The judging system**

The FX International Interior Design Awards is open to architects, designers, clients and suppliers for interior design projects or products completed or launched between June 2019 and July 2022.

The judges are independent experts who are recruited to form a fresh new panel each year, and comprise engineers, clients, architects and designers from many different sectors to reflect our audience. They were invited onto the 2023 panel because of their experience, opinions and commitment to design. Judges, and their companies, are not permitted to enter any categories.

Each category is judged by a different set of judges, so if you do not win in one category you could win in another. Because of the large number of entries, and to preserve the integrity of the FX Awards, we use a transparent system in which each judge ranks their top six entries in each category before they know who their co-judges are. With up to ten judges for each of the hotly contested categories, these placings are then scored and added together to confirm the shortlist and the ultimate winner.

Many thanks to all our judges, who gave up so much of their valuable time and brought their expertise and enthusiasm to the process. Sincere thanks also to Cherrill Scheer, who will act in an advisory capacity as unofficial chair of the judges.

BAR OR RESTAURANT

WINNER

RUST JAZZ CLUB  
by Republic Metropolis  
Architecture(RMA)

This former factory building laid dormant in the corners of the city for many years. Now, revived as a jazz club, the design celebrates its industrial past that include rusty, peeling finishes, the smell of industrial steel, and a strong sense of ‘brokenness’. The roughness and simplicity of the era can be seen in the original water tanks and canisters, which have been transformed into a restaurant, office and VIP space.

The judges said...

‘A fantastic repurposing of a redundant industrial water facility. A truly stunning interior. Creates an excitement that is visual, intellectual and sensual’

Sponsored by  2024



FINALISTS & JUDGES' COMMENTS



**Florattica by ACME**  
‘A great use of pattern, textures and rich tones which stay true to the story of 17th century high fashion. A stunning interior’



**TT Eatery by FREYA Architects**  
‘Beautiful use of colour and illustration; an excellent fun project’



**CHUAN HSI PA TZU by HDC Design**  
‘The detailing is elegant and original. The use of materials is visually stunning’



**Corner at Tate Modern by Holland Harvey**  
‘Timeless, modern and elegant. Impressive sustainability aspects to the project’



**BIRCH FOREST by Kris Lin International Design**  
‘An elegant interior. The structures flow like the interior of a cathedral.’



**beECHOES by LSD Interior Design**  
‘Simple and elegant, each part is considered and in itself beautiful’



**Milky Way by Republic Metropolis Architecture(RMA)**  
‘Impressive scale with sweeping structural forms and colour changes to invite you in’



**Daphne by Studio Paolo Ferrari**  
‘Impactful use of colour, and pattern with great lighting design to bring the whole scene together’

PUBLIC SECTOR

WINNER

Cheng Yu Tung Building,  
Jesus College Oxford  
by MICA Architects

The Cheng Yu Tung Building for Jesus College is a prominent and unique mixed-use building in central Oxford, which brings together teaching, retail, research, NHS healthcare and student living within a 21st century third quad for the Elizabethan college. The scheme is a major addition and new active building in Oxford’s evolving city centre providing high quality new retail space, combined with new teaching and social facilities for the student community, turning a previous unsightly ‘back’, to a positive ‘front’. The building and its extensive new landscape significantly increase step-free access to the historic multi-level college and transforms the legibility and transparency, of a traditionally closed environment.

The judges said...

‘Amazing definition of space. We all loved it!’

Sponsored by  2024

JIM STEPHENSON, HUFTON AND CROW



FINALISTS & JUDGES’ COMMENTS



Child Development Unit by AFL Architecture  
‘Fun and cheerful invention’



Elm House Brighton by Aliva UK and Hassell  
‘Collaboration between manufacturer, contractor, and designer. Perfect!’



Entopia by Eve Waldron Design  
‘Exemplar retrofit from a sustainability perspective’

JACK HOBHOUSE



Renal Unit, Western General Hospital  
by HLM Architects  
‘An elegant light filled, site sensitive solution for a complex brief’

PAUL ZANRE



CR & Shenzhen Airport  
by Poetic Space Design  
‘Simplicity of design and use of materials creates a calming environment’

BOUNDLESS LENS-DING CHAOPAN



The Acorn and Gaumont House Surgery,  
Peckham, London by The Manser Practice  
Architects + Designers  
‘Significant transformation and improvement on a tight budget’

RUTH WARD

MUSEUM OR EXHIBITION SPACE

WINNER

Stevns Klint Experience  
by Tinker Imagineers

The Stevns Klint area, on the Danish south coast, is one of the best places in the world to see traces of the asteroid that caused a mass extinction 66 million years ago and is a UNESCO World Heritage Site. There, in the old lime quarry of Boesdal, the Stevns Klint Experience has emerged as a world-class attraction, both architecturally and as an experience for visitors. International design agency Tinker Imagineers was commissioned to develop an exhibition about the extinction, its effects, and the scientific discovery of the traces left by the asteroid. The exhibition includes an immersive film about the dramatic extinction and the survival of life on Earth is playing. The images are partly projected on a huge cut out of the cliff with the Fish Clay layer in the middle. Here, visitors can see up close where and how the asteroid left its traces. Elsewhere the whole story leading up to extinction is told chronologically. Visitors are led through from what the world looked like 66 million years ago, when dinosaurs were roaming the earth with our ancestor mammals, to the time when the asteroid hit the Earth.

The judges said...  
*'Amazing and so entertaining!'*

Sponsored by  2024



MIKE BINK, STEEN GYLDENDAL

FINALISTS & JUDGES' COMMENTS



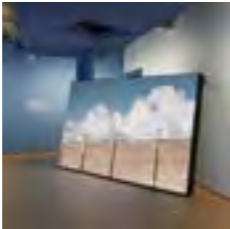
ANDRIY BEZUGLOV,  
MARYAN BERESH

**Module of Temporality**  
by balbek bureau  
'Strong arch and graphic identity with a good narrative'



HUFTON + CROW

**First Light Pavillion Museum**  
by Casson Mann  
'Strong powerful structures and interaction'



HUFTON + CROW

**The Holocaust Galleries**  
by Casson Mann  
'Holistic use of light, sound, materials and colour to tell the narrative'



HUFTON + CROW

**Hunterian Museum**  
by Casson Mann  
'Well executed'



WEN LUO

**The Century City Hangzhou, Multi-media Showroom**  
by Dejoy International Architects  
'Just out and out beautiful'



GARETH GARDNER

**The National Portrait Gallery**  
by Nissen Richards Studio  
'A holistic, visitor-focused enrichment of an iconic space'



MIKE BINK, JORRIT LOUSBERG

**Media Museum**  
by Tinker imagineers  
'Fun, dramatic spaces inviting personal interaction'



YIWEN XU

**UNBOUNDED**  
by XTENDERE ARCHITECTURE  
'An innovative approach: product design and architecture produce seamless interiors'



JACK HOBHOUSE

**Home Galleries, Museum of the Home**  
by ZMMA Ltd  
'A sympathetic transformation with great use of light and colour'

GRAPHICS: SIGNAGE  
AND WAYFINDING

WINNER

Abrahamic Family House  
by Maynard Design Consultancy

Abrahamic Family House is a centre for learning and dialogue dedicated to fostering peaceful interfaith coexistence, located in the Saadiyat Cultural District of Abu Dhabi. Three striking cubic buildings house a mosque, a church and a synagogue, all within a single complex 6,500sqm site and with wayfinding in three languages (Arabic, English and Hebrew). Each architectural structure is simultaneously equal in volume and dimension but is shaped individually. For the sign products Maynard Design Consultancy had to pay the same attention to equality of language, ensuring that no implied hierarchy could be seen across multilingual messages. The wayfinding products feature durable materials that were strategically selected for in-built longevity. Flexible sign products were selected where information (such as prayer times) might need to be regularly updated. Processes were selected to reduce waste and minimise visual clutter; religious iconography was engraved into the concrete and limestone surfaces, for example, showcasing design integration with the architectural landscape. The end-result is a sensitive reflection of the rich diversity of the site, united beneath shared human values.

The judges said...  
*‘Beautiful design aesthetic with a sensibility of lightness and harmony to the architecture’*

Sponsored by  2024



FINALISTS & JUDGES' COMMENTS



**Global Management Consulting Firm Office by HLW International**  
*‘Bold, simple and high tech using technology in an interesting way’*



**Schrödinger by HLW International**  
*The graphics enhance the architecture and ad hoc designs are effortlessly integrated into the overall fit-out’*



**Subway Miami Headquarters by HLW International**  
*‘Successful take on the spirit of the client in a tasteful style’*



**Kiewit Power Regional HQ by HOK**  
*‘Clean and simple design’*



**The Children's Place by HOK**  
*‘True to the branding aesthetic; calm and inviting for the users’*



**WPP Chicago Colocation by HOK**  
*‘A great modern and creative design’*



**Elizabeth Line by Maynard Design Consultancy**  
*‘The underground line innovates an already established TFL brand with subtle and elegant detailing’*

LIGHTING PRODUCT

WINNER

Nova  
by Humanscale

Nova combines advanced technology, modern design, and thoughtful engineering to create a superior task light and a high-performance video call light. The LED technology casts a uniform footprint of glare-free, neutral light without the projection of multiple shadows. Nova is a versatile light, which Humanscale created to combine industry leading technology with a sleek design that is timeless and long lasting.

The judges said...  
*'A great lighting solution from Humanscale'*

Sponsored by  2024



FINALISTS & JUDGES' COMMENTS



**Halo by Astro Lighting**  
*'A lighting solution with touch sensitive controls which works everywhere'*



**DRY by LED Luks**  
*'DRY a simplistic group of both functional lighting combined with sleek aesthetics'*



**A Garden Breeze by Nulty Bespoke**  
*'Effective design'*

FLOOR COVERINGS

WINNER

ReForm Transition  
by Ege Carpets

Experience sustainable design at your feet with ReForm Transition, an exclusive designer collection in collaboration with Parisian studio Manganese Éditions. The collection is directly inspired by nature's own virtuous, 'recycling process' with seeds transforming into plants and flowers that eventually become seeds again for a new beginning. Three designs are available in a range of soft and faded colours, each carefully researched and coordinated in terms of the role they play in facilitating good physical and mental health. Greys and browns from the earth provide a soothing, safe and solid ambience, while greens and blues bring new energy, creativity and optimism.

The judges said...  
'Versatile, functional and creative'

Sponsored by  2024



FINALISTS & JUDGES' COMMENTS



**Tessa Union by Forbo Flooring Systems**  
'Functionality and flexibility combined well'



**Taralay Impression by Gerflor**  
'Gorgeous and inventive texture'



**Handgrade Premier by Havwoods**  
'A luxurious looking finish and an adaptable choice of finishes'



**Upon Common Ground by Interface**  
'Carbon neutrality ambition whilst offering a range with wide application'



**Northern Soul by Milliken**  
'Functional and fun, reflective of Wigan!'



**Bonbon Collection by REPUBLIC OF II BY IV**  
'Creative use of imagery. Bold, fun and colourful'



**Chroma Collection by REPUBLIC OF II BY IV**  
'Beautiful use of 3D imagery on a flat surface'



**Baxab®Eco by Topcret**  
'Highly suited for retail; the Lacoste store is impressive'

MIXED-USE DEVELOPMENT

WINNER

West End  
by HLW International

The now shuttered Westside Pavilion in West Los Angeles was given new life as a creative office campus, with the former Macy’s building acting as the catalyst. Tasked with the transformation of the former department store, HLW reimagined the expansive floor plate to suit a range of tenants, from the media and technology industries to the financial sector. HLW’s radical adaptive reuse plan for the site repurposes the building infrastructure in an environmentally responsible way, whilst also integrating it into the urban fabric. Maintaining the main architectural features and integrity of the existing structure, the building was sliced by a courtyard with the resulting two halves reconnected by open lobbies that create a seamless indoor-outdoor connection. What was once a hermetically sealed box is now a visible hub of activity that brings new life to a prominent urban corner.

The judges said...  
‘An extraordinary division of space with clever use of materials’

Sponsored by  2024



BENNY CHAN

FINALISTS & JUDGES’ COMMENTS



**Chun Jiang Mansion Sales Center by Amber Design**  
‘An interesting and dynamic space’



**WaterSHED. Wardle Academy by BDP**  
‘An innovative reworking of a disused asset; a sensitive, sympathetic, and sustainable refurbishment’



**China Huashang Financial Center by CCD/Cheng Chung Design (HK) Ltd.**  
‘An architectural marvel. Contrasts between strong lines and curvy elements create a sense of intrigue’



**LIGHT PATIO by Kris Lin International Design**  
‘Unique and original’



**DREAMLAND Cultural World Sales Center by LS Design**  
‘A well executed design with futuristic, but warm elements and subtle interior architectural features’



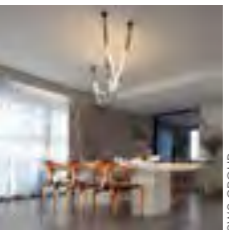
**Kampus by Mecanoo**  
‘Wonderful integration of old and new introducing urban gardens and biophilia throughout’



**FOUNDRY by Portland**  
‘A sympathetic and imaginative reworking of the original building’



**30 Mount Row - Gallery and Apartment Building, Mayfair, London by Studio Mackereth**  
‘A design that honours its historical and cultural contexts.’



**Hefei OCT International Town Showflat by SWS Group**  
‘A stunning interior that is bold, memorable and inviting’

RETAIL SPACE

WINNER

The Bedford  
by Studio Paolo Ferrari

An immersive and multifaceted experience, The Bedford is developed By Burnac and designed by Studio Paolo Ferrari takes guests on a journey that wavers between the familiar and the unexpected. The project pushes the boundaries of how marketing galleries approach sensorial experiences in unexpected ways with Studio Paolo Ferrari and By Burnac entirely re-thinking the conventional sales office and moving beyond the typical transactional experience. Instead, The design takes visitors on an intuitive and multifaceted journey with elements of surprise and magic, offering prospective residents a window into the considered offerings at The Bedford. The studio worked only with natural materials, in a colour palette of earthy neutrals, intended to express serenity and calm. The restrained design is brought to life with subtle textures, warm metals, and white oak woodworking.

The judges said...  
'Outstanding Design. A challenge resolved to make for a great user experience'

Sponsored by **HI·MACS**



JOEL ESPOSITO

FINALISTS & JUDGES' COMMENTS



ANDREY BEZUGLOV,  
MARYAN BERESH

**Symbol Showroom  
by balbek bureau**  
'Clever use of limited  
palette - wonderful  
curved surfaces'



JOHN PAUL

**The Glenlivet Speyside  
Visitor Centre by  
Blacksheep**  
'A carefully curated space  
with a pleasing blend of  
textures and colours'



AIGING

**ANN ANDELMAN by  
JASON DESIGN GROUP**  
'Dramatic and complex  
series of soft and hard  
surfaced reconfigurable  
spaces. Great colours'



HANDOVER AGENCY

**THE PORTICO SHOP,  
NATIONAL GALLERY  
by LUMSDEN DESIGN**  
'Well structured with  
generous circulation  
space'



FREE WILL PHOTOGRAPHY

**MASONPRINCE by  
TOMO DESIGN**  
'A good interpretation  
of a quirky brand,  
showcasing futuristic  
thinking whilst capturing  
the essence of the past'



OUYANG YUN

**SND Concept Store,  
Shenzhen by Various  
Associates**  
'A well designed  
immersive experience  
for the shopper'



ZHENG YAN

**Zhima Health Store  
in Chengdu by  
WUUX Architecture  
Design Studio**  
'Clever use of light and  
reflection and detail to  
effectively double the  
height of the space'



**Maria Tash by Zebra**  
'Great execution - nicely  
done'

PUBLIC, LEISURE OR  
OFFICE FURNITURE

WINNER

Aeonica  
by Spacestor with Gensler

Gensler collaborated with Spacestor as a product design consultant to develop Aeonica, a new furniture range and interior toolkit for workspaces. Inspired by timeless classical architectural forms, Aeonica offers a versatile kit-of-parts that is fluid, flexible, and futureproof. The concept revolves around five classic geometric building blocks that are engineered for inter-compatibility. This allows for the creation of various space-makers, such as Colonnades and Pantheons, without the need for constructing walls. The patent-pending quick-release joining system and pure geometric shapes enable shapes to be reused and reconfigured multiple times, fostering longevity and adaptability.

The judges said...

'Beautifully executed. Furniture to enjoy!'

Sponsored by  2024



FINALISTS & JUDGES' COMMENTS



**Path by Humanscale**  
'Intuitive for the user, with less moving parts to adjust'



**Smart Conference by Humanscale**  
'Stylish and elegant design'



**Join Desk in Wood by Isomi**  
'Simple, effective design solution'



**Bau by Lammhults**  
'A playful take on modular seating, with solid flexibility to modularity'



**Otto by MARK Product**  
'Good solution to an ever changing use of space and requirement'

MATT JESSOP AND  
GEORGIA HOWIE



**Space Shifter by MF Design studio X Workbench**  
'A practical solution to enhance a space'



**Balance Lounge by Modus Furniture**  
'Multi-use and functional furniture in an elegant design'

JAKE CURTIS



**Aran by Morgan Studio**  
'Excellent sustainability credentials, a beautifully considered design piece'

PHILIP VILE



**Earth Table by Workbench**  
'Simple but elegant design with sustainability'

HOTEL

WINNER

SHANAN Anji Deep Stream  
by Fununit Design

Located at the north foot of Tianmu Mountain in Anji is SHANAN: a hotel with 17 guestrooms which take in bamboo woodland, mountain, and sea views. Achingly beautiful, calm and luxurious, guests enjoy visually clean and warm spaces comparable to Barcelona’s Casa Mira. The design takes on an interpretation of the integration of architecture and nature. Each guest room has floor-to-ceiling windows with magnificent view of the mountains with windows to frame the interior and exterior views, to create a warm and rustic beauty.

The judges said...  
‘A unique and immersive design that focuses on the exceptional surrounding environment’

Sponsored by meir: faucets



FINALISTS & JUDGES’ COMMENTS



Angsana Chengdu Wenjiang  
by CCD/Cheng Chung Design  
(HK) Ltd.  
‘A great combination to create warm, inviting spaces’



Mangrove Work&Stay by  
Mangrove & Humanscale  
‘A minimalist concept offering great design for clients’



Mantingfang by Shanghai Hyee  
Interior Design Co., Ltd.  
‘Imaginative use of colour and contrast that works well’



ASAKUSA VIEW HOTEL ANNEX  
ROKKU by TANSEISHA Co., Ltd.  
‘A bold interior with great fun materials that capture the essence of Tokyo’



Watergate Bay Hotel  
by Tate + Co Architects  
‘A great example of building reuse with a subtle harmonious connection’



Continental Sorrento  
by Woods Bagot  
‘A successful restoration of a beachside property that connects location and narrative’



Intercontinental Sydney  
by Woods Bagot  
‘Thoughtful and respectful restoration of the interiors which are beautifully composed’

SURFACES

WINNER

Elm House  
by Aliva UK and Hassell

This new facade on a new university campus building pushes the envelope for design customisation of a surface finish and cladding product. A first-of-its-kind in facade design, Aliva UK custom-designed a bespoke 3D white terracotta tiled ceramic veil cladding, using a design that takes its architectural inspiration from murmuration's of starlings that take flight over the iconic Brighton Pier. The cladding was also custom designed to reference the architect's design intention, to visually relay the historic mathematical tiles of Brighton and the state of change that students experience whilst at university. A bespoke ceramic veil frame wraps around the building from the second level to support 3,120sqm the customised terracotta tiles that were manufactured and supplied by Aliva UK.

The judges said...

'A gorgeous surface that I'd be keen to specify!'

Sponsored by  
SURFACE  
DESIGN  
SHOW



FINALISTS & JUDGES' COMMENTS



CRL Quartz Cristallo Collection from  
CRL Stone

'Great features include subtle patternation and scratch, heat and stain resistance'



Diamond Series by Laminam

'With an effect like polished marble, this provides a sustainable alternative'



Luce by RAK Ceramics

'Great back lighting abilities enhance the interest and scope for this range'



Recycled vinyl wallcovering Fibras  
by Vescom

'An environmentally friendly product with great colours and textures'



Fuji Acoustic Ceiling Tiles by Woven Image

'Interesting and unique with options to illuminate'

WORKSPACE ENVIRONMENT  
SMALL (under 40,000 sq ft)

WINNER

Spotify Singapore office  
by M. Moser Associates

Addressing exponential growth in the Asia Pacific, Spotify needed an immersive and dynamic office space to embody its playful culture. Spotify approached M Moser to design an office space that not only achieves these qualities, but also addresses its mission to unlock the potential of human creativity. The design of Spotify's Singapore office is direct and mindful of the company's role as a media creation platform and takes advantage of having two floors to separate public and private working environments. On the first level, the spacious work lounge and semi-private café are multi-functional and inviting, where they host a stage area for internal and external events, creating a space that attracts industry talent. The second, hosts the private workplace: an environment addressing Spotify's aspiration to allow passionate and innovative people to work at their very best. The space is conducive for collaboration and focus work and includes a library, team zones, and numerous meeting rooms each with distinct visual identities.

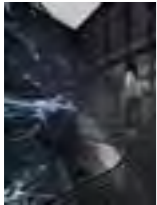
The judges said...  
*'We all want to work here! A welcoming thoughtful and beautiful space'*

Sponsored by **VESCOM**



OWEN RAGGETT

FINALISTS & JUDGES' COMMENTS



CHIEF DESIGNER

**FRAME CHINA Office by ARCHSTUDIO**  
'Unique and well considered; impressive use of space and materials'



BETH DAVIS

**70-72 Broadwick Street by Buckley Gray Yeoman**  
'A well considered space in a mixed use building with attention to detail required for a complex building'



GILBERT MCCARRAGHER

**Black Kite by Bureau de Change Architects**  
'A simple recurring concept set within the canvas of the base build'



MAZTERZ, LIM YU HENG

**Penn Color Technology Center by DP Design Pte Ltd**  
'The attention to detail has resulted in a truly crafted interior'



ED REEVE

**80 Charlotte Street by Gensler**  
'A beautifully detailed and crafted space, perfectly executed'



**First Love Foundation by Gensler**  
'A dynamic space that is impressively scaled and intimately considered'



KIM ROGERS

**Broadcast Music, by HLW International**  
'Modern industrial design creates a welcoming space'



KIBRE

**Ilona Rose by Kibre**  
'An interesting use of materials to make the office space welcoming'



NACASA & PARTNERS INC. (YSATORU UMEITSU)

**EGG by MAWD**  
'Feels fresh and new: an incredible range of work settings that support varied work postures. Well done'



JACK HOBHOUSE & ARTIQ

**The Bindery by Piercy&Company**  
'An elegant, light touch restoration and upgrade, tastefully done'



SIMON KENNEDY

**Diespeker Wharf by TTSP & PTEA**  
'A skilful connection of two floors with lots of natural light'



PETER GHOBRIAL

**Chief by Thirdway**  
'A amazing space that is thoughtfully integrated into a centuries old structure.'



HUFTON + CROW

**ANZ London by tp bennett**  
'Clever use of sustainable material to achieve a bright and welcoming workspace.'



NICOLE ENGLAND

**M&C Saatchi by Woods Bagot**  
'Well executed - a plethora of spaces that are different but thread together well'

**WORKSPACE ENVIRONMENT**  
**LARGE** (over 40,000 sq ft)

**WINNER**

**Boston Consulting  
Group Headquarters**  
by Piercy & Company

Boston Consulting group (BCG) works globally to solve complex societal and business challenges, but this project was a problem closer to home: to design its new London headquarters. Commissioning design studio Piercy & Company in a people-led design process for the new flagship office, the design studio drew inspiration from their client and spent six months embedded at BCG's existing offices, seeking to resolve another complex question: where do people do their best work? Through deep research and inquiry, four essential elements emerged: variety, comfort, flexibility and community. The resulting scheme responds holistically and extensively to these challenges, pushing the bounds of what's possible to truly reflect the BCG ethos and become an example for future offices.

**The judges said...**  
*'A corporate office with soul! Fabulous place to work'*

Sponsored by **MillerKnoll**



JACK HOBHOUSE, CHARLES HOSEA, HUNTERS CONTRACTS

**FINALISTS & JUDGES' COMMENTS**



ART GRAY

**Belkin International  
Headquarters by HLW  
International LLP**  
*'A considered design narrative  
that is referenced throughout'*



ZAOHUI HUANG, QIANYING ZENG

**Only Group Headquarter Office  
by JAMES LIANG &  
ASSOCIATES LIMITED**  
*'Fresh, distinctive spatial  
backdrop approach'*



DYSON

**Dyson Global HQ, Singapore  
by M. Moser Associates**  
*'Large scale consistently  
elegant brand'*



PETER GHORBIAL

**Forge by Thirdway**  
*'Interior spectacularly uplifts the  
project. Bold and dynamic  
material selection'*



HUFTON + GROW

**William Blair by tp bennett**  
*'Idiosyncratic approach  
well delivered'*



TREVOR MEIN

**Heritage Lanes, 80 Ann Street  
by Woods Bagot**  
*'Strong combination of old and  
new with interventions that  
reference the buildings history'*



GSP

**OCC ODE INTERNATIONAL  
OFFICE BUILDING  
by YU SPACE DESIGN**  
*'Single repetitive motif which  
makes for a strong interior'*

LIGHTING DESIGN

WINNER

Woven by Adam Smith  
by dpa lighting consultants

Woven by Adam Smith is a reimagined Michelin-starred culinary experience set in the luxurious spa hotel Coworth Park, Berkshire. The interiors of the restaurant have been replanned to provide a new main restaurant and conservatory. This includes a dedicated and memorable entrance space, complete two climatized wine rooms and an exceptional cheese room. dpa's response to the brief has followed the interior design by MHD and sculptural features by Umut Yamac with a scheme that integrates lighting into every aspect of the design and providing lighting tests on each element to ensure perfection was achieved.

The judges said...  
'This blows my socks off! A really thoughtful and inventive use of lighting! We all loved it'

Sponsored by  2024



COURTESY OF MARTIN HULBERT DESIGN; PHOTOGRAPHER: MARK BOLTON

FINALISTS & JUDGES' COMMENTS



TOM NIVEN

Clyde Place by BDP  
'Elegant use of light and lighting control'



NICK CAVILLE

Senate House Steps Pavilion, University of London by BDP  
'An atmospheric scheme; lighting the structure creates a beacon in the centre of Senate House'



BEIJING PRO LIGHTING DESIGN CO., LTD

Lanzhai vegetarian restaurant by Beijing PRO Lighting Design Co  
'Simple, poetic with a profound understanding of light and shadow'



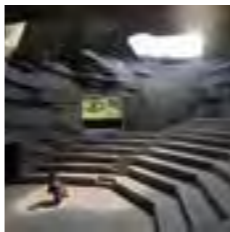
COURTESY OF DUCK & WAFFLE

Duck & Waffle by dpa lighting consultants  
'Impactful use of light to enhance materiality'



COURTESY MSC CRUISES; PHOTOGRAPHER: IVAN SARFATTI

MSC World Europa - Outdoor Promenade 'Illuminated Trees' by dpa lighting consultants  
'The use of integrated LEDS creates a striking effect with a clever use of reflections'



JONATHAN LEJONHURFUD

Chapel of Sound by Ning Field Lighting Design Corp., Ltd.  
'The pure minimalism is where this succeeds and its balance with natural light'



TOM ARBAN

Canadian Parliament West Block - Committee Rooms by Office for Visual Interaction, Inc. (OVI)  
'A technically elegant and versatile solution to a challenging multi-use environment'



DUBAI EXPO2020

World Expo Dubai - Al Wasl Plaza by Office for Visual Interaction (OVI)  
'A well considered and thoughtful application of technology to create an immersive environment'



DOF SKYGROUND

MYS Hotel by SEAM Design  
'Beautiful detailing and use of colour'

LEISURE OR  
ENTERTAINMENT VENUE

WINNER

Night of City  
by JFR Studio

Located in the city centre of Hangzhou, also known as being one of the fastest growing tech hubs in China, Night of City (NOC) combines various design, technologies, artistic expressions, and multi-disciplinary collaborations to create transcendental experiences within the 6,300 sqm venue. The 46 generous avant-garde private rooms combine live DJ, karaoke, gaming, dining and performances all within the privacy and safety of individual rooms: a crucial design consideration for the post-pandemic era. Inspired by the concepts of astral traveling and alternate realities, NOC is an immersive, surreal, multi-purpose nightlife entertainment experience. Featuring metallic surfaces and kinetic mechanical structures, the spatial experience becomes a constant process of metamorphosis and transformation with specialised lighting effects and abstract visual animations on custom high-resolution LED panels, choreographed to enhance the senses and imagination.

The judges said...  
*'The integration of physical materials, digital display and lighting is masterful'*

Sponsored by  2024

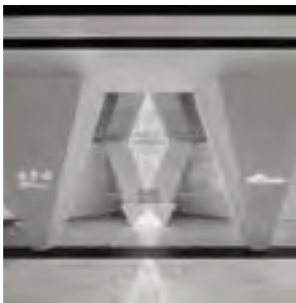


FINALISTS & JUDGES' COMMENTS



INNA KABLUKOVA, SERGEY MELNIKOV,  
NIKITA SUBBOTIN

**MIRAGE CINEMA by DA BUREAU**  
'A dynamic design that uses simple forms and lighting to transform the user experience'



DESIGN PLUS DESIGN

**Mystical Reverie: Interweaving of Energy Fields by Design Plus Design**  
'The design creates a space that is both calming and energizing'



JONATHAN LEJONHUFVUD ARCHITECTURAL  
PHOTOGRAPHY & JIANGNAN PHOTOGRAPHY

**WUSHANG DREAM MALL INTERNATIONAL CINEMA by One Plus Partnership (Hong Kong) Limited**  
'Bold composition of forms'



ARCH-EXSIT

**Jiaozi Venue N5-1 Project by PMA (PolyMorphArchitects)**  
'Spatially exciting, witty and contrasts with surroundings in a striking way'



K&J VISION / RMA

**NEOBIO by Republic Metropolis Architecture (RMA)**  
'A whimsical and inventive design, colour and form to create space for learning and play'



**Honeymoon Maison Maternity Care by Nothing But Design**  
'Traditional spaces but every detail is considered, elegant and refined'



LU HABA

**C&D Shanwaishan Clubhouse by Z.POWER DESIGN & EGD DESIGN**  
'Simply elegant'

OUTDOOR SPACE

WINNER

Mayfield Park, Manchester  
by Studio Egret West

The Mayfield Park is designed as a flexible space for events and festivals, with high-quality integrated utilities and infrastructure. Reinforced anchor-points for stage set-ups, sunken electrical provisions, and under-path cabling are some of the carefully considered provisions for streamlined event hosting. A sequence of spaces is showcased in this design scheme. A terraced garden overlooks the 'Mayfield Lawn', with the historic Mayfield Depot in the background; a 'Wildscape Zone' has historic artefacts such as a salvaged Victorian hog back beams sat amongst a floodplain meadow; the de-culverted section of the River Medlock meanders around with a weathered steel jetty projecting over the repaired heritage river wall. The 'Play Yard' has a fully-accessible play tower and a slide that crosses the river. As place-makers Studio Egret West's key mission is to design places for people.

The judges said...  
'A show-stopping outdoor experience with such welcoming design'

Sponsored by  2024

RICHARD BLOOM & JARRELL GOH



FINALISTS & JUDGES' COMMENTS



DIRK LINDNER

**The Reflection Garden at 25 Cannon Street**  
by Tom Stuart-Smith with Buckley Gray Yeoman  
'Beautifully simple response to an ambitious brief'



CHILL SHINE

**Xi'an Poly Palace of Light Phase II**  
by DEAN DESIGN  
'Delightful whole family centrepiece in high density landscape'



JOHN STURROCK, JASON HAWKES

**Brent Cross Town Substation**  
by IF\_DO  
'A colourful transformation of a station in an iconic urban setting'



BILLY HUSTACE PHOTOGRAPHY

**Seaplane Lagoon Ferry Terminal**  
by Marcy Wong Donn Logan Architects with Peter Logan Architecture + Design (PLAD)  
'A tough job brilliantly and simply executed'



JACK HOBHOUSE

**The Featherstone Building Pavilion**  
by Morris+Company  
'Every workspace should have spaces like this'



PAUL RIDDLE

**El Gouna Conference and Cultural Centre**  
by Studio Seilern Architects  
'An inviting sci-fi abstraction'

PUBLIC SPACE SCHEME

WINNER

Shanghai Women’s Federation Infant Rearing Research Center  
by Liben Design Office

A renovation of an old building located on Kangping Road in Shanghai, it serves as a parent-child centre. This building accommodates various facilities such as a reading room, art studio, and performance space all designed for creating a comfortable environment for children’s growth and providing a suitable venue for infant parenting research topics. Combining the teaching content and concept of the parent-child class, the design concept revolves around a ‘mother’s hug’. The resulting design scheme includes zoned themes, such as an art market, with the aim for parents and children to can gain immersive experiences.

The judges said...  
‘Compassionate design for public use’

Sponsored by  2024



FINALISTS & JUDGES’ COMMENTS



**GUANGZHOU HUADIWAN LIFE CENTRE** by **ENJOYDESIGN**  
‘Great rejuvenation-the simplicity, lightness and permeability of the street level is impactful’



**The Ripples** by **HITOMI&CO**  
‘Fantastic re-envisioned way to engage with culture and creative arts’



**Elizabeth Line - Ticket Retailing Facilities** by **Ideas Limited**  
‘Inclusive design of a busy transactional space’



**Shijiazhuang Poly · City Gather** by **JAMES LIANG & ASSOCIATES LIMITED**  
‘The central entrance is dropping into a sacred space of awe’



**U.S. Bank Tower** by **Jeffrey Beers International**  
‘Natural materials and the flow of space creates a welcoming atmosphere’



**FRAGRANT LAKE** by **LSD Interior Design**  
‘Offers sophisticated design in a playful way’



**Chengtou Wuhan Emblem Sales Center** by **Studio HBA**  
‘The composition of spaces and play of light are great’



**Zikawei Library** by **Wutopia Lab**  
‘Thoughtful, sensitive design that retains historic prestige of a library’

WINNER

Repton Gardens  
(residential amenities)  
by The Manser Practice  
Architects + Designers

Repton Gardens is a large Built to Rent scheme in Wembley named after Humphry Repton, one of the last great landscape designers of the eighteenth century and often regarded as the successor to Capability Brown. Briefed by client Quintain Living, The Manser Practice Architects + Designers has designed the communal areas of the project, such as residential lounges, lobbies, a gym, bar, and games room, as well as a dramatic staircase leading up through a triple height space to podium level gardens. The interiors of all these areas draws inspiration from the work of Humphry Repton, with a botanical theme that utilises an abundance of planting, timber, and other natural materials such as wood wool ceilings and Foresso; a sustainable surface recycled from timber offcuts. Superfluous finishes were avoided, with a polished concrete floor, exposed services, and hardwearing furniture to ensure longevity. The scheme includes a dedicated work from home space that residents can rent on a short- or long-term basis: a new concept for the build to rent sector and one that came about owing to the Covid 19 pandemic.

The judges said...

*'A series of inviting spaces with a great sense of fun. Strong architectural forms create a striking and warm design'*

Sponsored by  2024



RUTH WARD

FINALISTS & JUDGES' COMMENTS



FELIX DEMIN

**Green Flow by Bali Investments**  
'A beautiful environment with great attention to detail'



PETER CLARKE

**Home Southbank by Bates Smart**  
'Simple design focused on sustainability as well as community and reflects the heritage of the area'



**The Marlo by Dorrington**  
'A successful conversion and integration of several properties to create a mid century inspired theme. Well considered'



ADRIA GOULA

**Residential Building in the Romantic Area of San Sebastian by EL EQUIPO CREATIVO**  
'This space feels rich in history yet modern and fun.'



SCOTT AMARILUAL SCOTT NORSWORTHY

**The Parker by Figure3**  
'A light, bright inviting scheme with carefully curated contrasts in key spaces which introduces a great sense of fun'



JACK HOBHOUSE

**Repton Gardens (architecture and apartments) by GRID Architects**  
'Inventive division of space, and thoughtful design'



**Landscape Capital Villa by Mosevieta Space Design Co., Ltd**  
'The architectural aesthetic throughout creates a distinct softness to the space'



WEIMAX STUDIO

**Elegance in Sincerity by YHS DESIGN**  
'Detailed yet simple design. Such clever use of storage to create a journey and experience of space'

UK WORKSPACE ANY SIZE

WINNER

6 Babmaes Street  
by Fathom Architects

Responding to the changing nature of work in cities, 6 Babmaes Street is a new concept in workspace primarily for wellbeing and social interaction rather than desk-based tasks. Fathom Architects had an innovative brief: to provide social and collaborative space for The Crown Estate's office's. Its response was to design for human interaction and provide a relaxed and welcoming space with areas for people to recharge, connect and socialise. The project imaginatively repurposes a disused 1970's building, which celebrates the existing raw concrete shell and combining it with finely crafted interiors has created a characterful urban sanctuary with a variety of spaces for people to relax away from their desks. The completion of 6 Babmaes Street has had a direct impact on lettings in the area, with potential customers citing it as an unrivalled asset in the market.

The judges said...  
*'This blew us all away – remarkable and perfect!'*

Sponsored by FUTURE  
Designs



JAMES BALSTON

FINALISTS & JUDGES' COMMENTS



PHILIP VILE, TOM NIVEN

**Holbein Gardens  
by Barr Gazetas**  
'A sustainable solution that manages to really celebrate the heritage'



PHILIP VILE

**The Kodak  
by Barr Gazetas**  
'A clever design that mixes contemporary, industrial and heritage design codes effectively'



JACK HOBHOUSE

**FORA Montacute  
Yards by Ben Adams  
Architects**  
'Vibrant use of colour with adaptable spaces including a roof terrace'



HUFTON & CROW

**Julius Baer by  
HLW International**  
'Strong design – elegant and attractive'



MATT LIVEY

**Foundry,  
Brindleyplace  
by JRA**  
'Clever use of salvaged material with cost savings but no apparent loss of quality'



ANDREW BEASLEY

**No.1 Knightsbridge  
by MAWD**  
'A beautiful interior with considered use of colour, texture and space'



MF DESIGN STUDIO

**Confidential client  
by MF Design  
Studio X JAC Group**  
'Bright, light and fresh spaces have been successfully created to fit the brief'



JACK HOBHOUSE

**Faber & Faber by  
Piercy&Company**  
'Subtle design elements enhance and brighten the space which will surely stimulate creativity'



ANDREW SMITH, SG PHOTOGRAPHY LTD

**Nest at Glasshouse  
by SpaceInvader**  
'Great use of basement. Clever biophilic incorporation and lighting design'



MATT CLAYTON

**Ted Baker HQ  
by Spacelab**  
'Fun, bright and exciting project that reimagines the office into a collaborative space'



STÅLE ERIKSEN

**Hiscox Insurance's  
flagship London  
office by Studio TILT**  
'Warm and bright working environment with beautiful bespoke spiral stair to anchor the design'



HUFTON & CROW

**William Blair  
by tp bennett**  
'Great modulation of spaces by simple use of colour and linked by an impressive staircase'

2023 PRODUCT OF THE YEAR

WINNER

Re.Wrap  
by The Collective

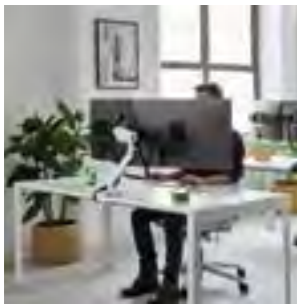
Re.Wrap is the result of two years research and development working in collaboration with designer Ric Frampton to deliver a ground-breaking acoustic fabric-wrapped system. Driven by a passion for circular and responsible design it uses only three materials: reclaimed PET, post-consumer aluminium and fabric. Re.Wrap delivers a versatile and responsible Class A acoustics system for commercial interiors, hospitality and auditorium environments. It is 100% recyclable and uses no adhesive, with the intelligent patent-pending design (2301569.6) can entirely disassembled allowing all the core parts and fixings to be re-used indefinitely. The system is installed and relocated swiftly using a simple hanging baton fixing system for walls, or a magnet and cabling system for ceilings. Installation is possible pre or post fit-out, and each panel is easily removable and replaced. The panel width is available up to 1m wide and 2.6m high and 10mm increments and a depth including fixings of 6mm. In addition mid-panel inclusion cut-outs are available for power, AV and services. Re.Wrap is made in Britain to support local trade and commerce and for carbon-usage control.

The judges said...  
*'A terrific design. Full stop'*

Sponsored by  2024



FINALISTS & JUDGES' COMMENTS



**Flo X by Colebrook Bosson Saunders**  
*'Aesthetically simple and an essential ergonomic tool'*



**AXESS from KEUCO by STUDIO F A Porsche**  
*'There are very few beautiful products for filling this function'*



**Elegante Veneers by Havwoods**  
*'Wall panelling that ticks all the boxes: useable, flexible, sustainable and looks great'*



**Atrio Private Collection by LIXIL GLOBAL DESIGN**  
*'Beautiful, practical and elegant'*



**Aran by Morgan Studio**  
*'Visually appealing as well as ergonomic and creating zero waste'*



**Brainy by Nowy Styl**  
*'A solution to make flexible work environments realistically flexible'*



**CookingRAK by RAK Ceramics**  
*'An innovative product that brings wonder to cooking as well as being space saving'*

# UK PROJECT OF THE YEAR

## WINNER

### Elizabeth Line by Maynard Design Consultancy

The Elizabeth Line is the new high frequency, high capacity railway for London and the South East, making travelling in and around the city quicker and easier. Maynard Design Consultancy was commissioned to design a line-wide wayfinding identity and product family to unite all 41 individually designed stations for a seamless passenger experience. Focused on the below ground tunnel environments, the studio introduced a common design language across a family of architectural components. Its products include cladding, platform edge screens, seating, lighting, digital advertising, signage and customer information systems.

**The judges said...**  
*'A powerful graphic to complement the best engineering project of the century'*

Sponsored by  SketchUp

RUTH WARD



## FINALISTS & JUDGES' COMMENTS



**Elm House Brighton** by Aliva UK and Hassell  
'An interesting façade'



**6 Babmaes Street** by Fathom Architects  
'A smart concept and model of efficiency skilfully refurbished utilising an elegant palette of materials'



**Verna, Acton Gardens** by GRID Architects  
'Consistently detailed shared multi storey space'



**Gallery Barn** by IF\_DO  
'Clever, flexible facility'

WINNER

Kampus  
by Mecanoo

KAMPUS is a new neighbourhood located in the heart of Manchester, which occupies the former Manchester Metropolitan University campus. Utilising the qualities of the existing built structures – Victorian brick canal-side warehouses and the 1964 concrete tower – presented the opportunity for Mecanoo to develop at the city block scale, creating new connections and a new destination. At the centre of the scheme is the public ‘hidden garden’, which has a festival like atmosphere with integrated vegetation of wild grasses and flowers. It features terraces for the cafes and restaurants, divided by strips of vegetation and has a strong link to the canal. The area also provides spaces for small and larger events and becomes a destination accessible from all directions. A melting pot of buildings and spaces, KAMPUS celebrates the vibrancy and diversity of the city with respect to the historic quality of Canal Street.

The judges said...

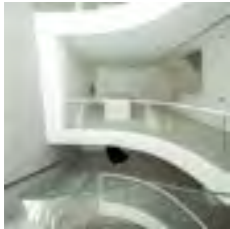
‘Wonderful integration of old and new introducing urban gardens and biophilia throughout’

Sponsored by **Interface**



ELIANO FELICIO

FINALISTS & JUDGES’ COMMENTS



WM STUDIO

**LIGHT HOUSE**  
by 323 STUDIO  
‘A dynamic three dimensional volume that allows natural daylight to flood deep spaces within a tightly constrained space’



XXXXX

**Chengdu Lakeside Villa**  
by ACE DESIGN  
‘A show-stopping interior with an innovative design and clever use of curve to accentuate light’



PHOTO RENDER ONE WORKS PHOTO FROM AEDAS WEBSITE

**San Marino Outlet Experience**  
by Aliva S.r.l.  
‘An amazing sustainability scheme with an elevated contemporary aesthetic and great use of eco-friendly materials’



BENNY CHAN

**The Cavaridge** by Danny Cheng Interiors Ltd.  
‘Great use of natural tones. A balance between organic and sharp lines. Pure and modern and a great use of space’



BENNY CHAN

**West End** by HLW International LLP  
‘Clever use of indoor/ outdoor spaces and manages to repurpose a shopping mall as a brown field site’



DROR BALDINGER

**Abrahamic Family House**  
by Maynard Design Consultancy  
‘Striking and bold. Modern and with a pure and holistic sentiment and great use of space and light’



**Mantingfang** by Shanghai Hyee Interior Design Co., Ltd.  
‘A beautifully designed boutique hotel that is tastefully developed and brings together the ‘six dynasties’’



**Brút Restaurant & Kaffi Ó-le** by tp bennett  
‘Gobsmacking success!’



HUFTON + CROW

**William Blair** by tp bennett  
‘Clean, sharp and embracing the lessons that the pandemic has given us in the workplace going forward’

### WINNER

#### Ekho Studio

Ekho Studio is a fresh force in design, looking to shape how people live, work, and play for the better, based on the belief that design has the power to transform people's lives through their environments. Established in 2021, by founding Partners Rachel Withey and Sarah Dodsworth, the agency is busy delivering innovative and interior schemes nationwide for clients such as AstraZeneca, CEG, Moorfield Group, PRS for Music, Robot Food, Inizio Medical and Bruntwood. The partners are friends, long-time design colleagues and share a desire to maintain both their passion for design and their sanity as working mothers of school-age children, whilst growing and thriving as a business. 'Ekho' is about having a listening culture, with the Greek spelling featuring a 'k' representing that extra kick of energy they bring to everything they do; 'Studio' because it's all about collective creativity and collaboration with their clients, their own team of talented designers and their network of consultant and supply partners.



## PRODUCT DESIGN COMPANY OF THE YEAR

### WINNER

#### Morgan

Morgan is a pioneering, family-founded British business, proudly dedicated to the design and manufacturing of high-end, contemporary furniture for design-conscious contract clients around the world. It has a long manufacturing history, which is in the hands of current owners Rodney and Katerina, who purchased it in 1992 believing they could bring something new to the world of British design and manufacture. Katerina, a graduate of the RCA, took on all product design, branding and marketing roles and immediately set about creating a new direction for the company. Despite excellent residual goodwill from the past, it took many years of new products to establish the company's independent and particular style of product which is focussed on timber and relentlessly on British manufacture at a time when outsourcing would have been the easier and cheaper option. Keeping skills in Britain and building them inhouse allowed for tight control of design aesthetic and of costs and, as has now become of overriding importance, sustainability, and good environmental practices.

Their high profile projects include The British Library, British Airways, the BBC and Wimbledon amongst others

They have commissioned and collaborated with many high profile and unknown designers to add to their manufacturing product range who are conscious of both their aesthetic and environmental impact to which Morgan is committed. 'We are a collective of detailed-led teams, with a deep love for design'.



## INTERIOR DESIGN PRACTICE 2023

### WINNER

#### Conran and Partners

Founded by Sir Terence Conran in 1989, Conran and Partners is an internationally renowned architecture and interior design practice. His legacy that 'good design improves the quality of people's lives' is deeply embedded within the practice's ethos. With studios in London and Hong Kong, Conran and Partners' portfolio extends around the world and embraces a rich and varied range of diverse cultures. Its projects range from hospitality, residential, workplaces, regeneration, recreation and master planning, which all use a holistic design approach to deliver strong compelling narratives that create a seamless synergy between interior and exterior spaces.

With its international projects, each one is tailored to respond to its distinct sense of location and personality, combining a context and purpose.

Conran and Partners delivers award-winning buildings and spaces, that are progressive and sustainable, achieved through a carefully considered design process of its overlapping architecture and interior design skills and experience.

Congratulations to its leading partners of Tim, Tina, Simon, Sebastian, Katy and Roderick.



## OUTSTANDING LIFETIME ACHIEVEMENT AWARD

### WINNER

## Hugh Pearman

Immersed in the world of architecture and design for some 45 years, Hugh Pearman has worked as a critic writing for both professional and consumer titles, as a magazine editor, occasional talking head on TV and radio, and as an author of books. Even launching architecture awards and lending a voice to campaigns to save significant buildings, he has carved a career and reputation as a leading voice in the design industry from an independent viewpoint: 'I am neither an architect nor a designer.'

A contributor to numerous print and broadcast media in the UK and internationally, including Royal Academy magazine and Architectural Record, Pearman was editor of the RIBA Journal until December 2020; an editorship he had for some 14 years. He was an architecture, design and art critic for The Sunday Times, 1986-2016, and co-founder of the annual RIBA Stirling Prize for Architecture.

His books titles include Cullinan Studio in the 21st Century (Lund Humphries, September 2020); Airports – a century of architecture (Laurence King, 2004); and most recently: About Architecture: an essential guide in 55 buildings (Yale, June 2023 which has received rave reviews from key figures in architecture, art, press and critics alike:

'Hugh Pearman's keen eye and encyclopaedic knowledge combine to make a book with universal appeal—as fascinating for a lay audience, as for those who study or practice architecture. It is a lightning tour of history—a sheer delight!'—Norman Foster.

'For those wanting a foundation course in architecture, [Pearman's] book is perfect, and sure to stimulate extensive further study of an art form that embraces us wherever we go.'—Simon Heffer, The Telegraph

'A treasury of possibilities. . . We come away with the sense that everything ought to—and can—be designed well, even the most ordinary of buildings.'—Sheehan Quirke, The Critic

'Sitting at the intersection of art and science, the history of buildings is really the history of people, and Hugh Pearman deftly brings that history to life.'—Maria Balshaw, director, Tate Galleries

His influence has undoubtedly shaped today's understanding of design and architecture and delivered it to a far wider world than just our industry. It is a great privilege for FX to recognise an outstanding critic and journalist for our most prestigious award.

Sponsored by **Morgan Lovell**



contract  
wallcovering  
upholstery  
curtain

VESCOM

Vescom UK Ltd.  
t +44 1295 273644  
e uk@vescom.com  
www.vescom.com

## Build Your Anything

With over 33 million users, Trimble SketchUp is the premier design software among creative professionals.

Combining the freedom to draw with the power to create, SketchUp helps you express your ideas about better buildings, environments, and communities to build consensus, excitement, and trust.

 **SketchUp**  
A Trimble Product

Morgan Lovell

Changing the way  
you think about  
workplace.



Exia, London



Maxis 1, Bracknell



Woolyard by GPE, London

**Proud sponsors of the FX Awards 2023**

Good luck to the 100+ shortlisted projects!

[morganlovell.com](http://morganlovell.com)

# SURFACE DESIGN SHOW

BUSINESS DESIGN CENTRE  
LONDON 6-8 FEB 2024  
[surfacedesignshow.com](http://surfacedesignshow.com)



THE BEST IN SURFACE  
MATERIAL INNOVATION



**SURFACE DESIGN SHOW IS THE  
UK'S LEADING EVENT FOR  
ARCHITECTS AND DESIGNERS**

Showcase your products in front of our quality  
audience of **5630 architects** and **designers**.

Find out more here: [surfacedesignshow.com/exhibit](http://surfacedesignshow.com/exhibit)



## CookingRAK

A one-of-a-kind hidden  
induction cooking system.



RAKCERAMICS.COM

Cooking  
RAK

RAK  
CERAMICS

showcase-interiors.co.uk

*Congratulations to all the FX winners  
and those who were shortlisted.*

# SHOWCASE

Delivering an  
on-brand experience,  
evoking emotions &  
creating inspiring spaces



sales@showcase-interiors.co.uk  
www.showcase-interiors.co.uk

**Interface**

## Upon Common Ground

With an ever-increasing consciousness of the need to connect with nature, we look to the land's traditional custodians for guidance. The Upon Common Ground collection centres on exploring Place and the deep connection to First Nations people have to it.

The collection represents five key regions of Australia and is made with 100% recycled solution-dyed nylon with a carbon-neutral lifecycle. Waterways and textured sands inspire Sandbank, Shallows, and Undulating Water. Dry Bark showcases weathered tree bark. And, Escarpment captures the beauty of stone cliffs.

**For more information:**

**+44 (0)800 313 4465**

**ukcustomerservices@interface.com**

**interface.com**



**Guaranteed,**  
*for life.*



### OUR COMMITMENT TO QUALITY



All parts, finishes  
and components  
guaranteed



We will repair or  
replace any product with  
a defect



For the lifetime of  
the product



So you can trust in  
products being beautiful  
and functional for life

**meir.**  
meirtaps.co.uk

Exclusively distributed by Faucets

***Faucets***  
faucets.co.uk

Find it, fund it, design it, build it,  
engineer it, develop it, reuse it,  
reconfigure it, cost it, manage it,  
light it, furnish it, refinish it, flex it,  
tech it, electrify it, populate it,  
enliven it, sell it, repurpose it,  
refurbish it, recycle it.


PR it!

We tell every bit of your story to the right people.

informare

T: +44 (0)20 3475 1735 @informare\_uk www.informare.co.uk

LONDON • NEW YORK • DUBAI • NETHERLANDS • HONG KONG • AUSTRALIA

 LX Hausys

**The ideal material for  
the greatest designs**



HIMACS allows you to play with light, touch and shape and to design whatever comes to mind. Warranty up to 15 years.  
#BecauseQualityWins



Information and samples can be obtained from: Alex Gray  
Phone: +44 (0) 1732 897820 | email: himacseu@lxhausys.com

[www.lxhausys.com/uk](http://www.lxhausys.com/uk)

**HIMACS**

MillerKnoll

Doing our part  
for a better world



The materials we choose affect the sustainability of a design more than anything else. That's why by 2030, all products across our collective of brands will contain at least 50 percent recycled content. Products like the Sayl Chair from Herman Miller are leading the way.

Follow our progress at [millerknoll.com/sustainability](https://millerknoll.com/sustainability)



Lighting the world from the United Kingdom

London. Dubai. Frankfurt.  
Madrid. Amsterdam. Detroit.

Spanning the globe at all levels, from the subterranean to the highest of buildings. From Edenbridge to Europe, the USA to the Middle east.

[futuredesigns.co.uk](https://futuredesigns.co.uk)

**FUTURE**  
Designs



**Save the date**

---

27  
November  
2024

---

[fxdesignawards.co.uk](https://fxdesignawards.co.uk)  
[designcurial.com](https://designcurial.com)

THANK YOU FOR JOINING US TONIGHT



HI·MACS



Interface®

meir.®

MillerKnoll

Morgan Lovell

SHOWCASE

RAK  
CERAMICS



SURFACE  
DESIGN  
SHOW

VESCOM

The FX International Interior  
Design Awards is produced by  
Progressive Media International,  
the publisher of FX

Progressive Media International  
John Carpenter House  
Carmelite Street  
London EC4Y 0AN



design/curial