



BOOK OF WINNERS 2024

THANK YOU TO OUR SPONSORS

HI·MACS

informare
PR • BRANDING • CONTENT • COMMUNICATIONS

MillerKnoll

Morgan Lovell

NowyStyl KUSCH+CO

RADII.

 SketchUp

 Universal
Fibers

The judging system

The FX International Interior Design Awards is open to architects, designers, clients and suppliers for interior design projects or products completed or launched between June 2022 and July 2024.

The judges are independent experts who are recruited to form a fresh new panel each year, and comprise engineers, clients, architects and designers from many different sectors to reflect our audience. They were invited onto the 2024 panel because of their experience, opinions and commitment to design. Judges, and their companies, are not permitted to enter any categories.

Each category is judged by a different set of judges, so if

you do not win in one category you could win in another. Because of the large number of entries, and to preserve the integrity of the FX Awards, we use a transparent system in which each judge ranks their top six entries in each category before they know who their co-judges are. With up to ten judges for each of the hotly contested categories, these placings are then scored and added together to confirm the shortlist and the ultimate winner. Many thanks to all our judges, who invested time on your behalf and brought their expertise and integrity to the process. It's a tribute to Cherrill Scheer, who died this year and has always supported Theresa on fairness and excellence at the FX Awards. RIP Cherry.

WELCOME



Good evening and welcome to the 2024 FX Awards at which we celebrate your magnificent projects.

Whilst I don't judge myself, I do invite experts from the industry to argue your corner. They have your back!

Our judges are brilliant. I invite them for their knowledge and experience, as well as their integrity to judge independently. They care as much as I do about these awards and will argue your case. We have judges who are developers, architects, designers, engineers and product designers to reflect all our categories.

FX has invited the recipients of the three special categories to celebrate with us tonight; Product Design Company of The Year, Interior Design company and of course the ultimate award for Outstanding Contribution to Design. So we are thrilled that the evening ends on these high notes. Congratulations to Deadgood, and Hawkins Brown for their magnificent achievements for which they are celebrated tonight, and Asif Khan who won our Breakthrough Talent award many years ago and has gone on to achieve Outstanding Contribution to Design. A great story.

With fierce international competition, If you've won or been shortlisted tonight, you really are world class.

And with so much support from you, as sponsors, as readers, as guests, and as participants in FX and the FX Awards, we have you to thank for this successful night.

A handwritten signature in black ink that reads "Theresa Dowling".

Theresa Dowling, Editor FX

JUDGES



Adam Strudwick
Principal, Perkins & Will

Adam helps to lead the interiors team at Perkins & Will in London with a focus on designing pioneering and sustainable places for some of the world's leading organisations.
perkinswill.com



Aston Woodward
Founding Partner, Oxygen

Oxygen was founded by Aston Woodward and Mike Harris to deliver a returns focused asset management service to investment partners. Over the last 20 years it has delivered out-performance to investors and now manages £3BN of assets.
oxygenanam.com



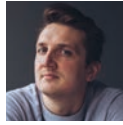
Ben Webb
Managing Director, 3Stories

3Stories is a brand and interior design agency based in London specialising in hospitality design.
3stories.co.uk



Edward Norman
Design Director, Corstorphine & Wright

Edward is a client-facing design director who has led major infrastructure projects in India and North America and designed award winning buildings in the UK.
corstorphine-wright.com



Ed Plumb
Founder and Director, Studio Found

Studio Found designs timeless hospitality interiors that tell a story of the space and place they inhabit.
studiofound.co.uk



Ewald Damen
Creative Director / Managing Partner, Virgile and Partners

virgileandpartners.com



Jill Entwistle
Editor/Writer

Lighting editor for FX, Jill Entwistle has edited a number of leading architectural lighting magazines, including Lighting (Illumination in Architecture). She has also authored three books on lighting, among them Detail in Contemporary Lighting Design (Laurence King).



Jonathan Chan
Associate, Morris and Co

Jonathan has accrued a wealth of cross-sector experience with over 15 years in the industry. Recognised by the RIBA as a Rising Star in 2018, he now co-leads the Office+ team at Morris+Company, delivering workplace projects at the intersection of craft and technology.
morrisand.company



Kathryn O'Callaghan-Mills
Design Director, Area

Kathryn oversees the regional and European design teams at Area, a leading B Corp organisation specialising in workplace design and construction.
area.co.uk



Nick Johnson
Director, Johnson Pinney Architects

Based in Bermondsey, London, Johnson Pinney Architects create exceptional interiors and intelligent architecture for private individuals and brands alike.
johnsonpinney.com



Nora Liu Kanter
Principal, Jeffrey Beers

Nora Kanter's work marries technical precision and creative inspiration. Her experience ranges from large-scale hospitality environments to private residences and restaurants.
jeffreypeers.com



Rachel Johnson
Managing Principal, Wimberly Interiors

As the studio director for the London office, Rachel is responsible for ensuring the quality of design and delivery of all London projects.
watg.com



Theo Williams
Design Director, Buy Design

Theo Williams has designed products for renowned companies, was Head of Design for John Lewis and former Creative Director of Habitat and Kingfisher PLC. He founded buydesign.com, a platform connecting businesses with designers.
buydesign.com



Tim Bowder-Ridger
Partner/Principal, Conran and Partners

Conran and Partners is an internationally renowned architecture and interior design practice, founded by Sir Terence Conran.
conranandpartners.com



Vanessa Brady OBE
CEO & Founder, SBID

Vanessa is an award-winning interior designer and founder of The SBID, spearheading the UK's professional accreditation body for interior design standards. It has earned a global reputation with over thirty years experience working across the A&D profession.
sbid.com



Caroline Jacob
Lead Colour Material & Finish Strategist, SeymourPowell
 seymourpowell.com



Carolynne Shenton
Founder Director, Studio Mica
 Studio Mica is an award winning design company with a commitment to creative interiors architecture and design. It combines a spirited innovative design process with professional design management to provide distinctive and effective interiors.
 studiomica.co.uk



David Kramer
Creative Director, Square Dot
 David Kramer, with vast creative design experience, co-founded Squaredot with Kris in 2000. Together they've built it into an acclaimed, innovative workplace design agency.
 squaredot.co.uk



Gareth Gardner
Photographer, Writer and Gallerist, Gareth Gardner Photography
 Gareth Gardner is an architecture/interiors photographer and writer. He also runs an architectural photography gallery in Deptford.
 garethgardner.com



James Ramsey
Principal, RAAD Studio
 James Ramsey is the founder and owner of the design firm RAAD Studio. RAAD studio is an award winning firm that has built hundreds of projects worldwide.
 raadstudio.com



Jane Lawrence
Design Director & Interior Design Consultant
 Jane is a Design Director & Interior Design Consultant. Previously she was a director at Conran & Partners and Head of Interiors for Knight Dragon Developments Ltd.



Kirsty Dias
Managing Director, PriestmanGoode
 PriestmanGoode is an employee-owned, multidisciplinary design consultancy, specialising in transport, product, and experience design. Its purpose lies in designing a better, more sustainable future.
 priestmangoode.com



Lee Penson
CEO Penson, The Penson Group
 Lee founded Penson 20 years ago which is now a global interior design, architecture and experiential studio delivering some of the world's most creative people centric and planet health programmes.
 penson.co



Natalie Thomson
Architect, pensaer.
 Natalie has led many cultural and commercial refurbishment projects. Pensaer is a design practice that begins with a love for artisanship and the process of making, and culminates in handcrafted architecture done well.
 pensaer.london



Scott Lawrie
Director, ADP Architecture
 Scott is a director at ADP, an international, employee-owned architecture practice and certified B Corporation founded nearly 60 years ago.
 adp-architecture.com



Simon Allford
Executive Director and Head of Design Studio, AHMM
 Simon Allford is a teacher, writer and founding director of Allford Hall Monaghan Morris where he leads a design studio of 200 plus architects working around the world.
 ahmm.co.uk



Sumele Adelana
SketchUp
 Sumele Adelana (Associate RIBA) is an architectural designer, thought leader, and product specialist at innovative 3D modeling software company, Trimble SketchUp.
 sketchup.com



Zhuo Tan
Co-founder of Design Shanghai; Managing Director of Clarion Events China
 Zhuo launched Design Shanghai in 2014 with a small team from UK and led the team to develop the Design Shanghai portfolio, including Sustainable Design China Summit and Design Shenzhen becoming the Asia's largest network of annual design events.
 designshanghai.com

BAR OR RESTAURANT

WINNER

Eat Grill & Bar by Finkernagel Ross

Drawing inspiration from the building's rich heritage, Finkernagel Ross employed a design narrative which intertwines the old-world charm with contemporary allure. Bespoke installations, joinery, furniture, and lighting were crafted to honour the building's history alongside the restoration of original features such as the columns and cornices. The result: an immersive space transporting customers from the small town to the glitz and glamour of a big City. Opened in summer 2023, Eat Grill & Bar has quickly become a coveted destination.

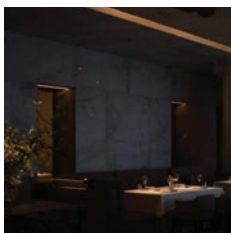
The judges said...

The design champions the original features



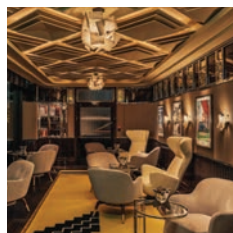
MOOD AUTHORS

FINALISTS & JUDGES' COMMENTS



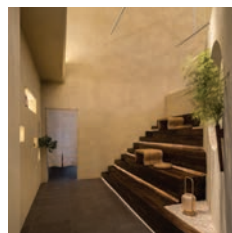
HERE SPACE

Affinité by A.ardon
Love the simplistic natural materials palette



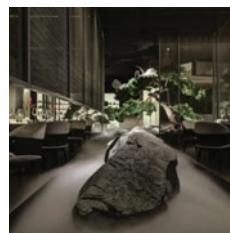
TARAN WILKHU

Brooklands at Peninsula London by Archer Humphryes Architects
Very bold design



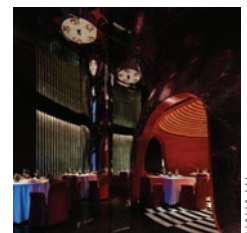
ENV

Transforming "the Old" into "the New" - A New Chinese Tea Drinking Space Reconstructed from an Old Plant by Atelier D+Y
This project masterfully blends tradition, industry, and nature



BING WU

JinYue (Beijing International Trade Hotel) by Beijing Hantang Landscape Interior Design Co., Ltd.
This extraordinary design is both beautifully conceived and delivered, and creates a hugely impactful, immersive space."



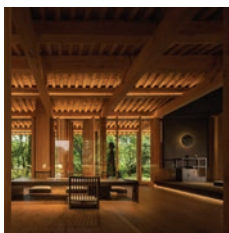
HAHA LU

Xingshufu Banquet by BTD International Design
"Drama and mystique, an innovative journey and experience created through dramatic spaces and volumes utilising materials, lighting, and form to great effect."



NIKITA KOVALEV

Frank Restaurant by Da Bureau Immersive design with strong lighting approach against reflective materiality



TING WANG

Ruyuan Restaurant by Hangzhou Jiading Interior Design A stunning simple, elegant, and dramatic space creating an amazing sense of calm



MoLi by Jingle Design Completely unique and original design



MCDONALD'S

McDonalds Jeju Oedo Flagship by UXUS Great take on a familiar brand



WOOW LIFE

Yue Man da Jiang Restaurant by Woow!Design Fabulous colour palette

PUBLIC SECTOR

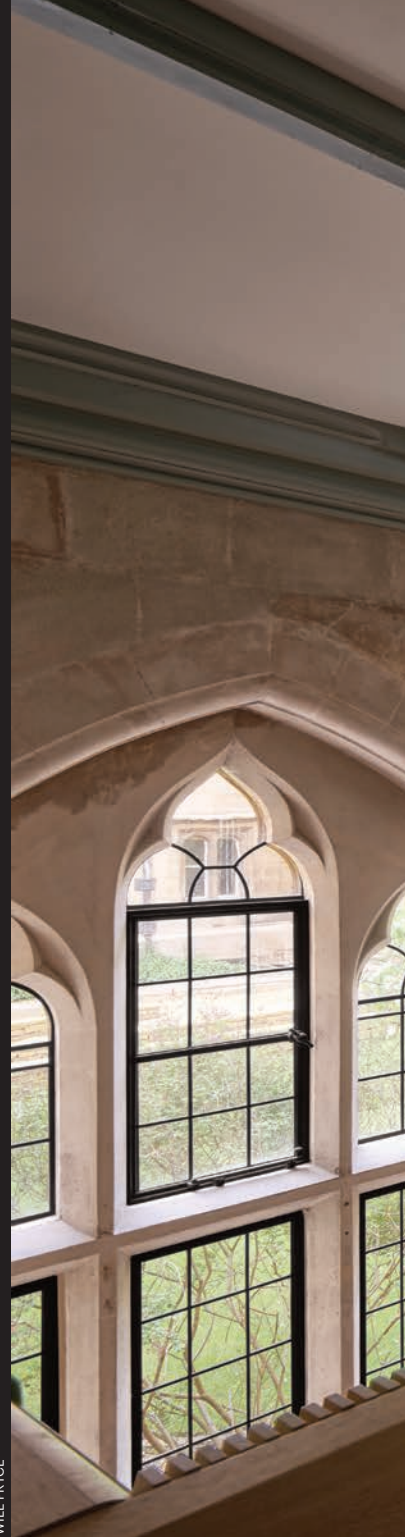
WINNER

The Jackson Library, Exeter College, University of Oxford by Nex

Renewing one of George Gilbert Scott's most accomplished works at the University of Oxford, this project combines a sensitive restoration programme with transformative improvements to the library's study spaces visitor accessibility, and environmental performance. The neo-gothic Jackson Library at Exeter College was built by George Gilbert Scott in 1857, and its setting is one of the most sensitive in Oxford. The library is Grade II listed and sits next to the 17th century walls of Convocation House, the Grade I listed historic court room of the Bodleian Library. A priority for the project, along with reviving the spirit of Scott's interiors, was the creation of additional study space for students, alongside improvements to the building's circulation, access and environmental performance. Conservation of the building envelope as well as its historic bookcases was also badly needed.

The judges said...

A beautifully released and detailed reinvention that unlocks the building for contemporary use



WILL PRYCE

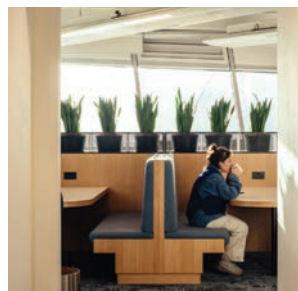
FINALISTS & JUDGES' COMMENTS



WEIREN HUANG, ZHICHUN ZHOU

Meizhou Dongshan Hospital by Fancy Design

Fluid curving lines soften the typically hard edged environment of a hospital setting



JIM STEPHESON

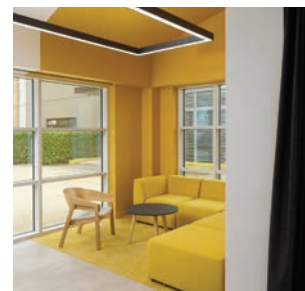
London City Hall by Architecture 00 with Fletcher Priest Architects

Great spaces created for community engagement



Cowan Centre for Medical Sciences & Biotechnology by Gow Hastings Architects

"Light, bright spaces, with carefully placed colour blocks to enliven the most sterile spaces



MATT CLAYTON

University of Westminster, Photography Department by Rock Townsend Architects

Bold and fun use of block colour with purposeful reference which inherently speaks of photography



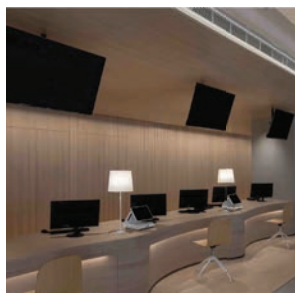
MATT CLAYTON

University of Westminster Games and Emerging Media Dept, by Rock Townsend Architects A contemporary space that balances warmth and tones with clever interventions



TOM BRIGHT PHOTOGRAPHY

London Metropolitan University Skills and Simulation Centre by Stride Treglown Effective use of colour to demarcate between social and focus spaces - supporting learning on' and 'off' the job



SUMU

Shanghai Hongqiao - One Stop Service Center for Overseas Talents by SUMU Well planned and warmly designed, a welcome take on public internal space that focus on simple natural approaches over brasher interventions

MUSEUM OR EXHIBITION SPACE

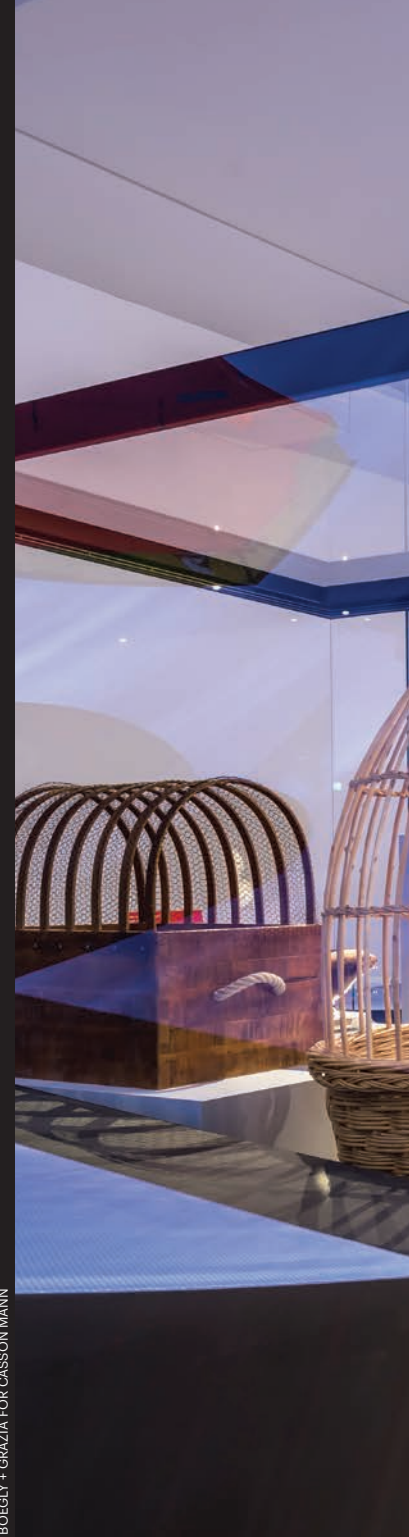
WINNER

Musée National de la Marine by Casson Mann

Integrating classical collections with spectacular scenography, sculptural elements and state-of-the-art technology, Casson Mann's transformation of the maritime museum brings the power and drama of the sea to Paris. Its scheme includes huge, sculptural 'landmarks' that lead visitors through the galleries: a ship's hull, a cluster of shipping containers and a giant wave animated by projections. The result is an immersive and unforgettable museum, suitable for a 21st century audience.

The judges said...

Strong design using bold sculptural forms to achieve drama. A clear and immersive experience



BOEGLY + GRAZIA FOR CASSON MANN

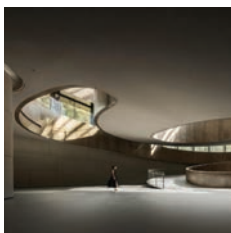
FINALISTS & JUDGES' COMMENTS



ANTAO

Commercial and Exhibition design of Chaoshan Mountain Scenic Area by Antao

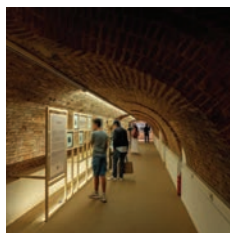
Subtle colour palette and clever use of relevant motifs in the design



TING WANG

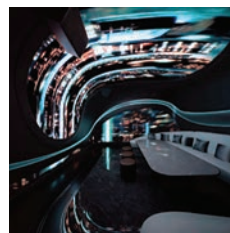
Sanxingdui Museum Public Area and Tourist Reception Center by CSD. Design

Impressively rigorous design to create such apparent simplicity



Elliot Erwitt. The Human Comedy by Fundacion Canal

Sensitive witty design with the clever use of projection and timber display devices



JFR STUDIO

HyperTanK by JFR Studio

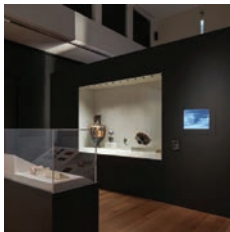
All encompassing immersive experiential design transporting the visitor to another realm



YIWEN XU, LIANG XU

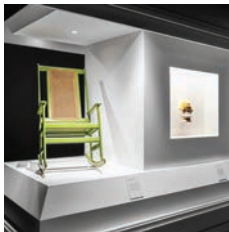
ZENE by Liang Architecture Studio

Singular design language applied throughout seamlessly integrating the brands technology



GARETH GARDNER

Paris 1924: Sport, Art and the Body by Nissen Richards Studio
This thoughtful and playful design leads anyone who is both interested and uninterested in sport to enjoy



ERIC LAIGNEL

Design is Language by Rapt Studio
Dimensional human engagement



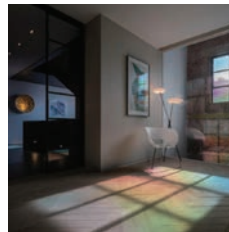
TAIRA KURIHARA / PIPS INC.

Chou Historical Museum by Tanseisha Co
Raises an interesting discourse in the presentation of history, a library and books



MIKE BINK

Turning Heads - kmska by Tinker Imagineers
Good combination of static and experiential displays enveloped in a cohesive design



YAN ZHEN

Being 3 Art and Life, Home, by Wenwu Spatial Design
Play on natural daylight - well integrated into every space

GRAPHICS: SIGNAGE AND WAYFINDING

WINNER

Elizabeth Line by Maynard

London's first accessible railway, the Elizabeth Line, is the result of the biggest infrastructure project in a generation. Maynard was tasked with delivering the wayfinding identity and product family to unite all 41 individually designed stations for a seamless passenger experience. It has introduced a common design language across a family of architectural components - which includes cladding, platform edge screens, seating, lighting, digital advertising, signage and customer information systems - with each individual component designed to feel integrated into the fabric of the architecture. With detailed, and even full-scale, station mock-ups Maynard Studio has successfully developed a sign family, based on existing TFL standards, and detailed design guidelines including information hierarchies, type sizes and layout principles for this momentous project.

The judges said...

Remarkable! Effortless, elegant simplicity

RUTH WARD

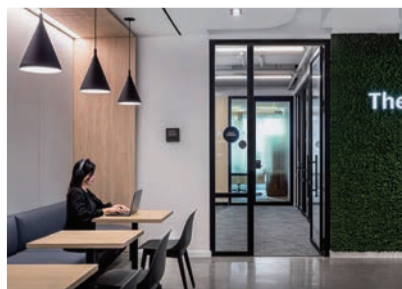
FINALISTS & JUDGES' COMMENTS



EILEEN M. ESCARDA

Subway, Miami Headquarters by HLW International

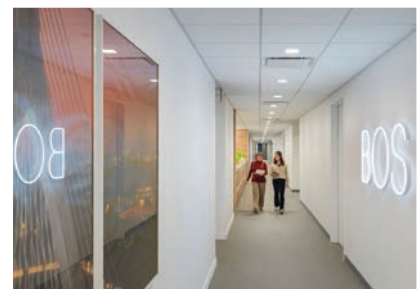
Successful take on the spirit of the client in a tasteful style



PAVEL BENDOV

Schrödinger by HLW International

The graphics enhance the architecture and ad hoc designs are effortlessly integrated into the overall fit-out



ANTON GRASSL

Global Management Consulting Firm Office by HLW International

Bold, simple and high tech using technology in an interesting way



Group Metropolitan by Informare
 Considered brand evolution as complete interpretation package

XXXX



Bishop Ranch by Rapt Studio
 Refreshing identity reflective of the area and community drive

ASHLEY BATZ

LIGHTING PRODUCT

WINNER

Slice Collection

by Republic of II by IV in collaboration with Viso

The innovative design of the Slice Collection addresses some of the key challenges associated in lighting spaces by seamlessly integrating aesthetics, functionality, and sustainability. Achieving a balance between direct and diffused light, the fixtures eliminate 'hot spots' and enhance the ambiance of its space. Inspired by the graceful interplay of light through a slender aperture, each sculptural pendant offers a 360-degree dual-sided illumination, with its advanced fabrication techniques - such as metal spinning, precision welding, and laser cutting - setting new standards in lighting sophistication.

The judges said...

Innovative lighting solution

REPUBLIC OF II BY IV AND VISO

FINALISTS & JUDGES' COMMENTS



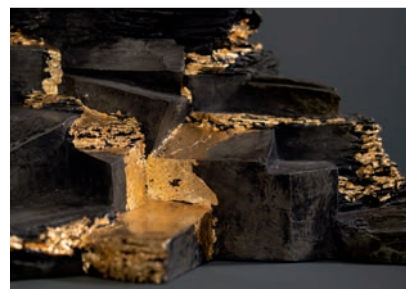
Halo by Astro Lighting

Its bold, simple shape belies the range of technically demanding challenges that were met, not least logistical and the integration of other functions than lighting



A-PLANE by FUTURE Designs

Multifunctional clever design



Cuenca by Katherine Richards Design

Ornate, delicate and considered

PHIL HUTCHINSON



NULTY BESPOKE

On the Wing by Nulty Bespoke
A carefully crafted evocation of birds in flight which has a fragile and ethereal beauty



LUXURY MARKETING HOUSE

A Garden Breeze by Nulty Bespoke
A delicately beautiful installation which cleverly exploits the different light-diffusing qualities of glass by varying texture, transparency and subtle colour

FLOOR COVERING

WINNER

Painted Garden by Milliken

Painted Garden is designed for well-being, bringing calm and tranquillity to the workplace, with the collection featuring a biophilic colour palette with nuanced tones and natural hues. It is one of the first carpet collections in the industry to be included in the International Well Building Institute's 'Works with WELL' programme; creating spaces that support health and wellness for all communities. The careful and precise placement of new and innovative yarn combinations is enabled by Milliken's latest generation tufting technology. Milliken's patented printing technology Millitron enables the complex colour blending and design layering not achievable with any other carpet manufacturing technologies. Recent advancements in Milliken's printing technology enable even greater colour variation and heightened saturation and complex intricate patterning with pinpoint accuracy in colour placement.

The judges said...

This well-researched and executed concept turns art into a tangible, flourishing experience

MILLIKEN

FINALISTS & JUDGES' COMMENTS



BOLON

The Grand Graphic by BOLON

Love the imagery used, current lifestyle design



Eco Rustic by Ege Carpets

Great sustainability credentials



Past Forward by Interface

Lifts the workplace environment from traditional 'flat' floor finishes



Modular ONE Herringbone by Parador
Sophisticated and timeless



Cristallo Collection by Republic of II by IV in collaboration with YO2
Bold use of scale and pattern

REPUBLIC OF II BY IV AND YO2

MIXED-USE DEVELOPMENT

WINNER

Grainhouse by Barr Gazetas

Barr Gazetas' was briefed to transform an entire London city block, under the same ownership, by delivering best-in-class office space on the upper floors, retail and restaurant uses on the ground floor and basement, whilst retaining the rich heritage of the buildings. It did so with great design complexity, including combining five historic buildings, each built separately at different times, with the resulting scheme drawing heavily on the buildings' industrial former uses as well as sensitively restores many of the original features that date from this time. The desire to retain the separate identities of the existing buildings, while combining the interior plans to form a single, flexible, open-plan office space internally, was an innovative and inherently challenging approach. The project not only successfully unifies these five rich buildings but puts people and their wellbeing at its heart.

The judges said...

Considered and contemporary design that provides a clean and comfortable work environment with industrial touches



PHILIP VILE

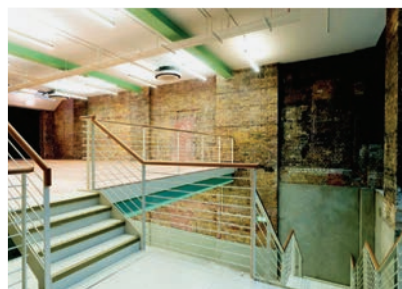
FINALISTS & JUDGES' COMMENTS



ROBIN QUERRELLE

Hoxton Farms by AIS Interiors

A well resolved challenging project with a balance between functional and residential style



PETER GHOBRIAL

Grafonola by Louis de Soissons

Interesting use of existing spaces and features in this workplace renovation



TING WANG

Domus by W. Design
High End dramatic design



TING WANG

CR Sanya, Haitang Bay by W. Design
Impressive design at large scale, reflective of the mixed development

RETAIL SPACE

WINNER

MASONPRINCE Shanghai Flagship Store by Tomo Design

MASONPRINCE Shanghai Flagship Store is an upgraded version of the brand's first store in Guangzhou, which continues the 'flame' theme transparent screen installations. The result is a dream-like, surreal 'three-domain space' that offers a unique retail narrative. Familiar yet strange nostalgic scenes are mixed with a bizarre virtual sense of the future, which break through the traditional commercial space model, with a surrealism concept permeating all three floors of the space. This conflicting yet harmoniously integrated experiential space leads customers into a surrealistic fantasy, who get to explore three different scenes as they shop.

The judges said...

Loved the experience led approach to this space and the detail throughout on all of the levels

Sponsored by **HI·MACS**

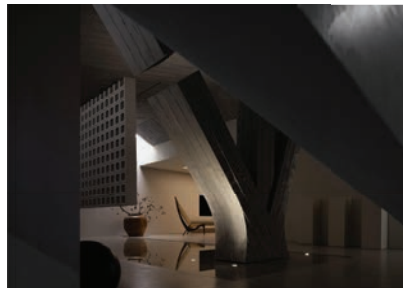


FREE WILL PHOTOGRAPHY

FINALISTS & JUDGES' COMMENTS



Moon Tower Sales Center by Amber Design
Luxurious and ethereal, it brings the outside in



Beyond Appearances by HyemingTam Studio
Impressive brutalist design aesthetic



Divana Atelier by Maincourse Architect
Considered texture and lighting approach within the space. Very calming

THANAPOL JONGSIRIPIPAT



YUUNUNSTUDIO

STARRYE by One Fine Day Studio & Partners
Well thought out detailing throughout the space



MATT CLAYTON PHOTOGRAPHY

ASOS PR Showroom by Spacelab_
Provided a luxury sense of arrival for such an entry-level brand, it was a surprise and a great design journey



ZHAO BIN

"Ultimate" Shangri-La Eyeglasses (Sihai Cheng) Store by Guangzhou (Chengyi) Decoration Engineering Co., Ltd.
Fun and playful design that replicates eyes throughout the area

PUBLIC, LEISURE OR OFFICE FURNITURE

WINNER

Tejo by Isomi

Flexible, sustainable, and all natural materials; Tejo is a recyclable modular sofa system which helps preserve Portugal's cork forests and marks a major step towards the circular economy. Made by recycling cork waste from the production of wine stoppers, its design combines soft contours, tactile surfaces, and clear aesthetics, resulting in a beautiful, practical and environmentally conscientious seating solution for contemporary interior settings. Each base and back module replaces plywood in its construction and is crafted solely from natural, renewable, and recyclable cork material. Led by the properties of the material and the production process, Tejo represents a bold new approach to sustainable furniture design and a commitment to low-carbon, zero-waste production cycle.

The judges said...

Brilliant thinking and approach to sustainability

SAM WALTON

FINALISTS & JUDGES' COMMENTS



Creator Block Outdoor by Frem Group
Humancentric design



Float Mini by Humanscale
Elegant and adaptable suitable for work and home

HUMANSCALE



M/Connect3 by Humanscale
Clever and stylish solution

HUMANSCALE



Active Pony by Humanscale
Health and wellbeing is at the core of the design

HUMANSCALE



LAMMHULTS

Geofanti by Lammhults
Great repair and reuse initiative



CLAREBALL IMAGES, JAMES LAWLEY STUDIO

Leandesk by Leandesk
A great addition to active working designed to be used and stored in informal working spaces, particularly important for those working from home



MALUMA by Modus
Both fun and functional



REPUBLIC OF II BY IV AND SENTTA

Samara Collection by Republic of II by IV in collaboration with Senta
Good looking, well detailed and timeless

HOTEL

WINNER

Shangri-La Nanshan Shenzhen by Cheng Chung Design

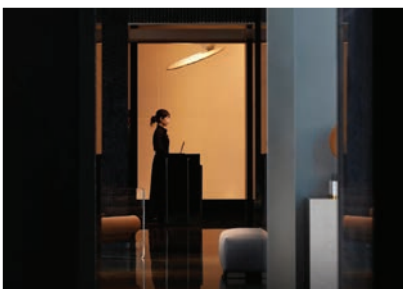
The design concept for this hotel aims to create a harmonious blend of traditional Lingnan aesthetics with contemporary design elements, cultural heritage of the region and providing a tranquil and inviting space for guests to relax and unwind. Chen Chung Design has delivered its design, which uses the theme of 'birds returning to their nests,' combining art and nature to deliver a spectacular scheme with tranquillity at its heart. By skilfully borrowing elements from Lingnan gardens such as pavilions, bridges, courtyards, and pavilions, a garden is created in this bustling city with the hotel's vertical gardens allowing for a greater integration of nature into the space.

The judges said...

Cohesive colour palette integrated with nature and natural light. Contemporary yet very classic

SENSOR/DESIGN-WANGTING

FINALISTS & JUDGES' COMMENTS



BIN ZHAO

Mirage M Cube Hotel by BDD Global Interior Design

Imaginative and well executed very contemporary design



FINBARR FALLON, COURTESY OF DP DESIGN

Conrad Singapore Orchard by DP Design

A vast space that has been fully utilised to reflect the height and shape in the atrium



AIREY SPACES, WILL PRYCE

The Peninsula Hotel by Hopkins Architects

Spaces are well proportioned and considered without the need to be flashy



JEFFREYS INTERIORS

The Tempus by Jeffreys Interiors
 Considered design, with guests needs very much at the forefront



NINA STRUVE & WOUTER VAN DER SAR

The Usual Rotterdam by Joi Design
 Great aspiration and hotel brief successfully fulfilled, showcases that design can still be at the forefront

SURFACES

WINNER

Gong's House by Various Associates

The project is situated in a village in the north of Yongjia County, Zhejiang, near the source of the Nanxi River. The design team delved into the construction methods of traditional local dwellings aiming to address the challenge of rural living facilities not matching the urbanised lifestyle, which caused inconveniences and reduced family reunions in rural hometowns, creating a space suitable for family and friends to gather and live comfortably. Upon entering the house residents are embraced by a spacious, welcoming environment adorned in warm brown tones that evoke simplicity and tranquillity. The extensive use of teak wood creates an enveloping feeling, providing a serene atmosphere for the home, which can accommodate up to 30 family members, allowing them to enjoy family time together.

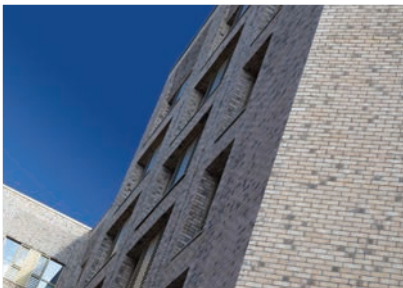
The judges said...

Great research...and use of natural resources



JONATHAN LEI/JONHUFWD

FINALISTS & JUDGES' COMMENTS



Morriss House, Nottingham by Aliva UK
Great adaptation of efficiency to historic vernacular



Silestone XM by Cosentino
Smoothly executed seamless appearance



Calacatta Roma by Neolith
Convincing natural look



WORKSPACE ENVIRONMENT SMALL (under 40,000ft²)

WINNER

Addison Studios by TiggColl

In designing its own architectural studio, TiggColl's intention from the outset was to work with the existing fabric, restore and enhance and take advantage of the original building's dense urban setting and local community history. Originally a Victorian mission church, the fabric's history, original footprint, and features (such as the Victorian trusses, lancet windows, bricks, sarking boards and roof structure) were put on display. This was reinforced by exposing all the structure and services and covering materials such as plasterboard and skirting were minimised. This all gave the project a coherent palette with a selective material use limiting excess application and developing a design aesthetic that can be applied to other spaces of a similar typology.

The judges said...

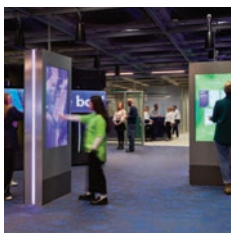
A sensitive, playful and ingenious refurbishment for a growing studio

Sponsored by **RADII.**



JAMES RETIEF, PETER LANDERS

FINALISTS & JUDGES' COMMENTS



PHILIP DURRANT

Velonetic, The Lloyds Building by Basha - Franklin

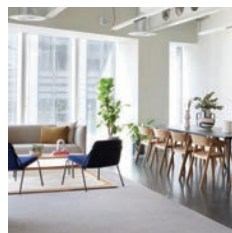
Unique identity enhancing basebuild



PHIL HUTCHINSON

WPP Atlanta Campus by BDG architecture + design

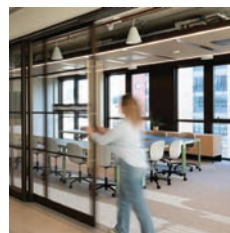
Stylish materials and colour palette with great contrasts used to define spaces and change atmospheres



JACK HOBHOUSE

Storey at 201 Bishopsgate by dMFK Architects

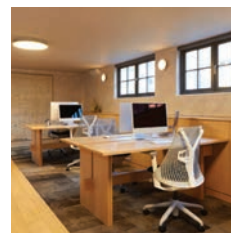
Accessible layout with clever use of timber and textures to soften the space



BEN TYNEGATE

Buro Happold London by Gensler

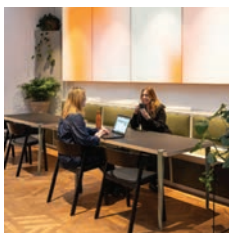
A welcome, airy, extremely flexible and highly environmentally conscious space, allowing display space for research



KASIA FISZER

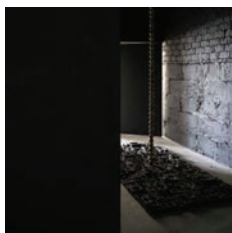
Stride.VC by HOP

Well executed, beautifully detailed, cohesive design



STIJN POELSTRA AND ALEX KENDRICK

Amsterdam living lab by M Moser Associates
A beautiful, light-touch project, which preserves the charm of the heritage concert hall



HEINONG

743 Art Lab by Nong Studio
A stunningly crafted project making great use of limited space. The room-within-a-room concept is strong and the use of the tree trunk, which is sprouting new buds is poetic and rather miraculous

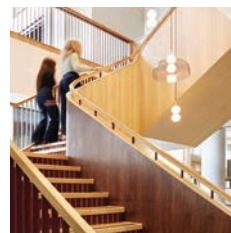


ERIC LAIGNEL

Greylock by Rapt Studio
A beautifully staged setting where experimentation, work and display become one in the gallery/workspace



Iris Capital by Siren Design Group
Materiality and space shaping are used to great effect



JACK HOBHOUSE

Convene Sancroft, St Paul's by Woods Bagot
Flexible narrative driven design with an interesting mix of open and enclosed spaces

WORKSPACE ENVIRONMENT LARGE (over 40,000ft²)

WINNER

Celonis Munich by Gensler

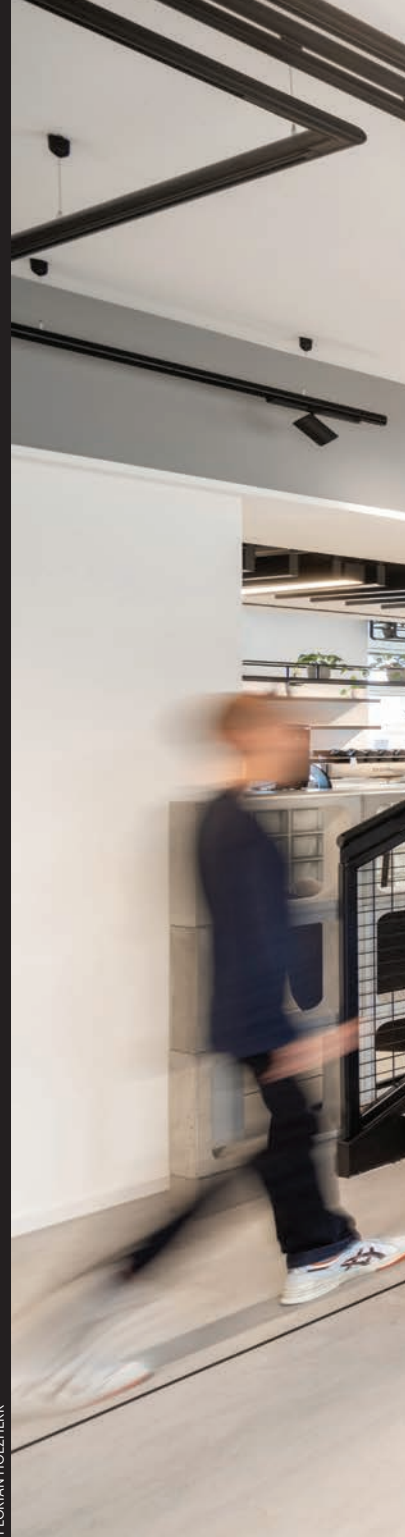
Celonis partnered with Gensler to transform its Munich office into an immersive, convivial space that embodies its values and identity. Gensler embraced the bones of the building, and celebrated its existing structures, while forming intentional connections to bring Celonis' people together. The practice was brought in at an exciting time to redesign its office spaces in Munich following a previous collaboration for its New York Headquarters. The whole design process was focused on meeting LEED gold standards from the outset, through the careful selection of materials, and reuse of existing structures. Building on our previous experience with Celonis, Gensler developed a consistent design narrative across the offices by ensuring similarities in brand implementation while maintaining each office's individual and local character.

The judges said...

The existing warehouse space is enriched with the design interventions. Creating a sequence of spaces that uses colour and art to lift the design from the ordinary. Bringing touches of hospitality and richness to the interiors

Sponsored by **MillerKnoll**

FLORIAN HOLZHERR



FINALISTS & JUDGES' COMMENTS



TARAN WILKHU

Myo, St Paul's by Basha-Franklin
This highly successful scheme feels like a genuinely progressive and refreshing approach to workspace design



PHIL HUTCHINSON

WPP Paris Campus by BDG architecture + design
It feels like a space that people can inhabit, and where meaningful interactions happen



STEVE TSAI

RioCan Head Office by Figur3
Rigorous detailing throughout, with clean considered lines and the consistency of key datums



PAUL GRUNDY, MURRAY SCOTT, OVERBURY

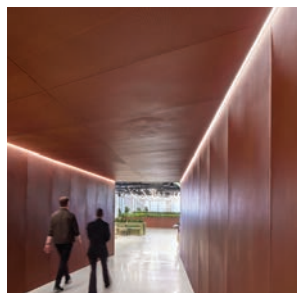
Arup Birmingham Office by HOK
Successfully combined the requirement to create a market leading workspace, whilst considering their client's agreement towards 2030 Zero Carbon operations



INTER_MOUNTAIN IMAGES

Merit Interactive Headquarters by LYCS Architecture

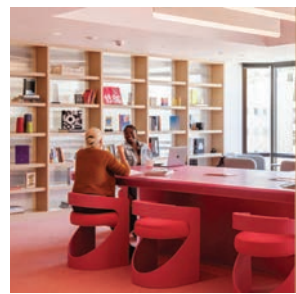
The design compliments the ebb and flow of the new flexible way of working, allowing staff freedom to interact with the space and enables the space to react to how they work



GARRETT ROWLAND

HSBC, NYC by M Moser Associates

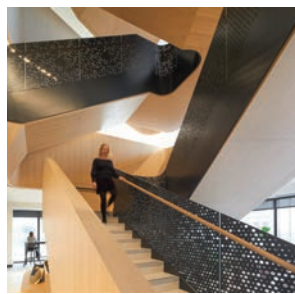
A bold and cohesive scheme that offers a different approach to large scale banking HQs



ZACH SORENSEN

Tinder HQ by Rapt Studio

The clean architectural interior is brought to life with the selection of furniture and the colour choices, moments of fun, surprise and delight



HUFTON+CROW

BP London by tp bennett

Imaginative environment

LIGHTING DESIGN

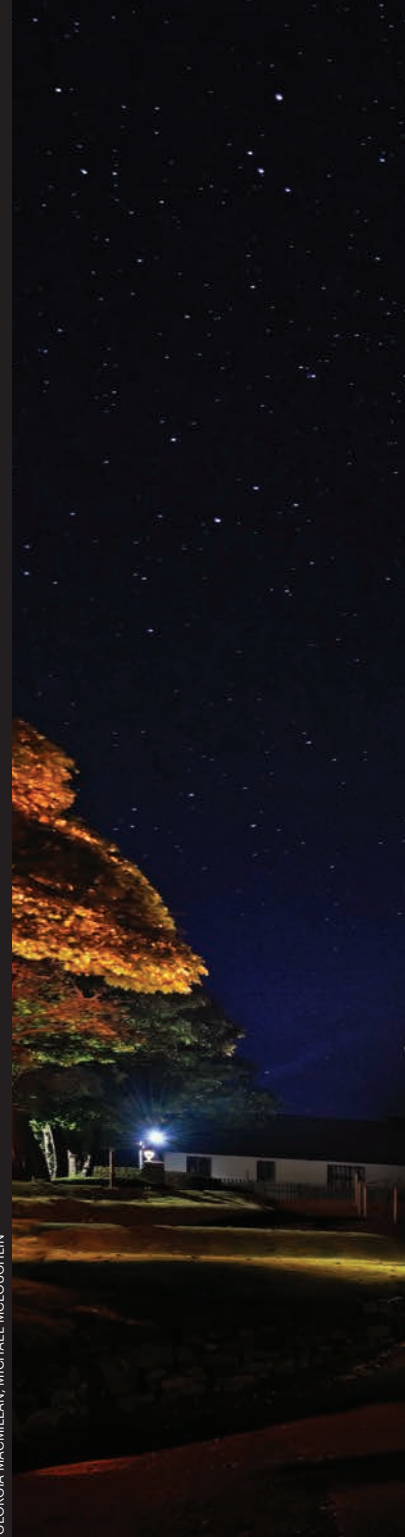
WINNER

St Patrick's Church by Dark Source

This project saw a local community seeking a design solution for its local church and tasking Dark Source to convey how lighting can eliminate light pollution whilst enhancing the night-time experience and its environmental benefits. The project required luminaires to be carefully modified and embedded in the architecture to avoid impact on the heritage fabric and the surrounding biodiversity. The project is an empowering precedent illustrating the effectiveness of small communities when taking environmental action despite a lack of resources.

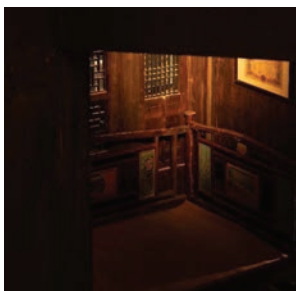
The judges said...

This blew me away. The careful and subtle change to the lighting is testament to the impact that lighting has not only on the buildings they light but also enriching them as a marker for the community



GEORGIA MACMILLAN, MICHAEL MCLOUGHLIN

FINALISTS & JUDGES' COMMENTS



BRAND MANAGER

Songyang Folk Museum by Beijing Pro Lighting Design

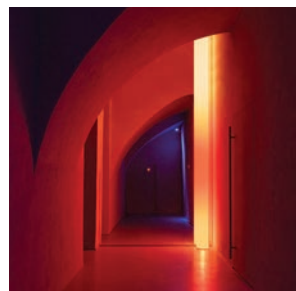
An artful use of light to bring the museum to life, concealing the light source and recreating pools of candlelight. Really a brilliant case of less is more



CK DESIGN LIGHTING

Mind your Style by CK Design Lighting

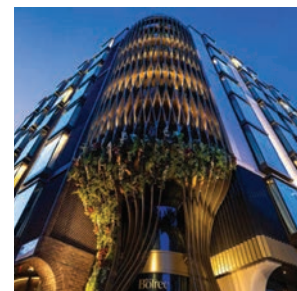
Subtle gradations of colour and intensity that provide even rendering while maintaining great contrast



NIKITA SUBBOTIN (LONDON STUDIO)

Department 57 bar & club by Da Bureau

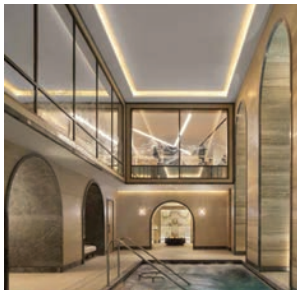
You really feel the energy and vibe of the club with the lighting skills bringing the drama and energy to this. Makes me want to dance.



ADAM PARKER, SIMON BROWN, JOHN CAREY

The BoTree, Marylebone Lane, London by dpa lighting consultants

A range of lighting solutions are used to suit the variety of the spaces, bringing another iconic piece of architecture alive in London's night scene



THE OWO AND RAFFLES LONDON AT THE OWO AND JAMES NEWTON

The OWO by dpa lighting consultants

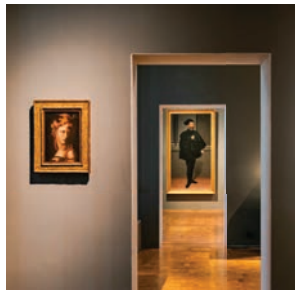
A vast, multifaceted project, with all the complexities of an important heritage building, which has been lit precisely, discreetly and with the most skilful attention to detail, inside and out



MICHAEL SINCLAIR

Skin Lab by Augustinus Bader & Lanserhof by Lichtvision Design

A lesson in reducing energy and light pollution while consulting the community and enhancing a building in all respects, including aesthetically



ANDREA CERIANI

The Raphael's Cross Room by Marco Miglioli Archilight studio

An impressively considered scheme, calibrated to the last detail to reveal a precious artefact in an optimum light



ANDY TYE - FRENCH + TYE

Ingredients Exhibition , Guinness Storehouse by Michael Grubb Studio

An essay in immersive lighting for display

LEISURE OR ENTERTAINMENT VENUE

WINNER

Bounce Battersea by Shed

Shed has created a new home for the sport of ping pong with an emboldened new design concept that is full of personality and vigour. It has delivered a bold and ambitious brand transformation, serving up a fresh new look and feel for Bounce, by dialling up the playfulness and energy that has long been associated with Bounce, and mixed in elements that derive from ping pong's chic parlour game origins of days gone by. The design showcases carefully paired fluted timber panelling from parlour days of old, with the sharpness of polished concrete and dark red ceilings for that instant sports hall demarcation. The bold use of geometric patterns, colour blocking techniques all hint to subtle references to the game, with the unmistakable retro gymnasium-style lines of a ping pong court are visible across the whole of the interiors leaving players in no doubt the game is certainly on!

The judges said...

Great use of colour, materials and lights in a non-naturally lit space. A retro, playful feel is achieved within a listed building

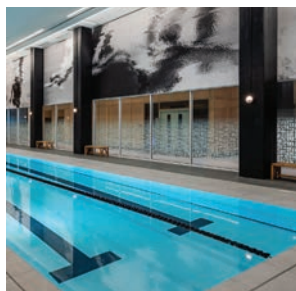
KRIS HUMPHREYS

FINALISTS & JUDGES' COMMENTS



MAZTERZ, COURTESY OF DP DESIGN

SIA SilverKris Lounge, Perth, Australia by DP Design
Nice flow, spatial variety and chic finishes



STEVE TSAI

Unity Fitness by Figur3
Thoughtful design to fulfill the brief. A variety of spaces keep the customer journey interesting while ensuring a sense of continuity



JFR STUDIO

HyperTank by JFR Studio
Thought provoking futuristic design



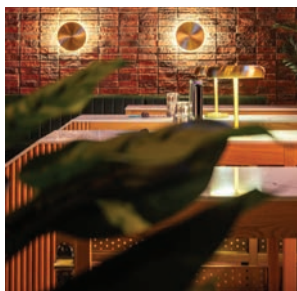
TOPIA VISION

Fangzun KTV by Newera Design
Innovative, forward thinking approach

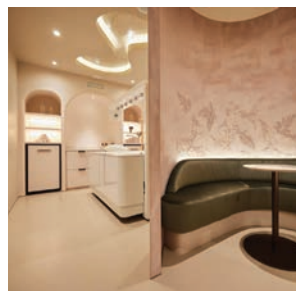


JERMAZING

Studio FIX by WGP Architects
Imaginative use of "dark to light" to create inspiring gym space



Oche Dubai Fountain Views by Zebra
Well laid out vibrant space



SOREN KRISTENSEN

The HVN Conscious Wellbeing - Knightsbridge, London by Zynk Design
Interesting, very warm and natural design

OUTSIDE SPACE AND LANDSCAPE

WINNER

Brent Cross Town Substation by IF_DO

How do you transform a utilitarian substation into a joyful and uplifting landmark? That was the challenge of the Brent Cross Town Substation brief, and the opportunity presented by a site that an estimated six million people go past every year. As one of the first structures delivered as part of the Brent Cross Town regeneration, the substation presented an opportunity to help define the identity of the new development. Designed by IF_DO in collaboration with the artist Lakwena, the exuberant colour scheme and vast scale of the substation wrap ensure that it will become a new local landmark, that will inspire and instil a sense of pride for the local community. At 21-metres-high and 52-metres-long, it is one of the largest permanent public artworks in the country, and at its highest point is taller than the Angel of the North.

The judges said...

A colourful transformation of a station in an iconic urban setting



JOHN STURROCK, JASON HAWKES

FINALISTS & JUDGES' COMMENTS



LISA DANIELS

**The Wave; Faculty of Social Sciences,
University of Sheffield by HLM**
A beautiful result



WISTER WENBING WU & LESTER YUCHENG WU

Dreaming in the Lotus Bay by W.W. Design
Entirely unique



PUBLIC SPACE SCHEME

WINNER

The London Institute of Healthcare by HLM Architects

The London Institute for Healthcare Engineering (LIHE) is a new building embedded within St Thomas' campus. The brief called for the creation of an environment that supports and nurtures project development with HLM Architects focusing on the flexibility and adaptability of the building to meet the users complex and varied needs. The result is a series of dynamic spaces that promote and enrich collaboration, capable of adapting to support a variety of working styles and team sizes, as well as providing privacy from 'competing' teams as necessary. Designed with adaptability in mind, the interior space can be reconfigured in matter of days, offering a truly flexible working environment. Demountable glass and solid partitions fix to a grid of bulkheads, creating a variety of working spaces.

The judges said...

Adaptable. Dynamic design that encourages collaboration



FINALISTS & JUDGES' COMMENTS



WANG TING

ABOVE EVERYTHING by LSD Interior Design
Inclusive sumptuous design



HANMOVISION

Hangzhou Greentown BEGONIA Sales Office
by SRD Design
Bridges the culture of Hangzhou with modern life beautifully



FLOWER IMAGE

CEBIS Shenzhen Campus by Taigu Design
Dramatic design blending futurism with practicality



WUHAN FANJING

Wuhan Huarun Park Lane Mansion by SRD Design
Opulent and welcoming space

BUILD TO RENT/PRS

WINNER

Roco by Soda Studio

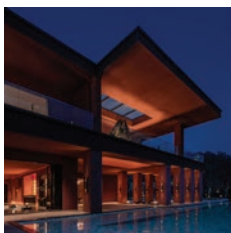
This PRS scheme adopts some of the concepts of co-living but with more spacious apartments and a community hub at the base of the building, which helps create more permeability with the surrounding areas. The project demonstrates that buildings considered 'boring' or 'undesirable' by some can provide the space to create high quality, mixed-tenure homes. 120 one- and two-bedroom apartments have been inserted within the shell of a former office block that once housed HMRC offices. This adaptive re-use project has transformed a tired 1970s building into much-needed homes in the heart of Liverpool, with a social focus for both residents and the wider public.

The judges said...

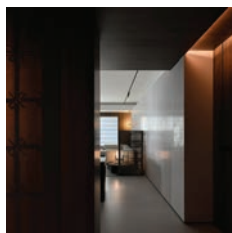
A good example of an amenity rich adaptive reuse project that balances intervention with respect

RICHARD CHIVERS

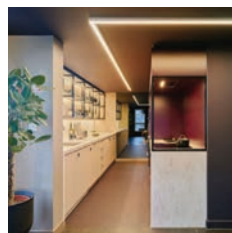
FINALISTS & JUDGES' COMMENTS



Xi Shang Guest House by Amber Design
Elegant and stylish

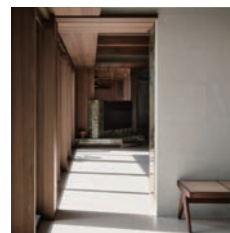


Sequence by HyemingTam Studio
Understated luxury



GUNNER GU

16-18 Potterrow by Jasper Sanders + Partners
Delightfully realised student living with consideration of space and material use



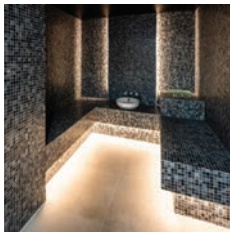
SUIYU STUDIO

H Residence by JC Interior
Ritualistic elegance



TOMI BIRD

Arbour by KIBRE
Luxurious design



TOM BRIGHT PHOTOGRAPHY

Homewood Grove by Stride Treglown
Very stylish retirement accommodation



TEN

Broad Street by TEN
Loved the use of biophilia throughout



82MM

Ebb & Flow, Station Hill by The Vawdrey House
Design with the end user fully in-mind



PETER LANDERS, PAUL KARALIUS, TARAN WILKHO

Enclave: Croydon by TiggColl
A BTR scheme that fully delivers a sense of place and community

UK WORKSPACE ENVIRONMENT ANY SIZE

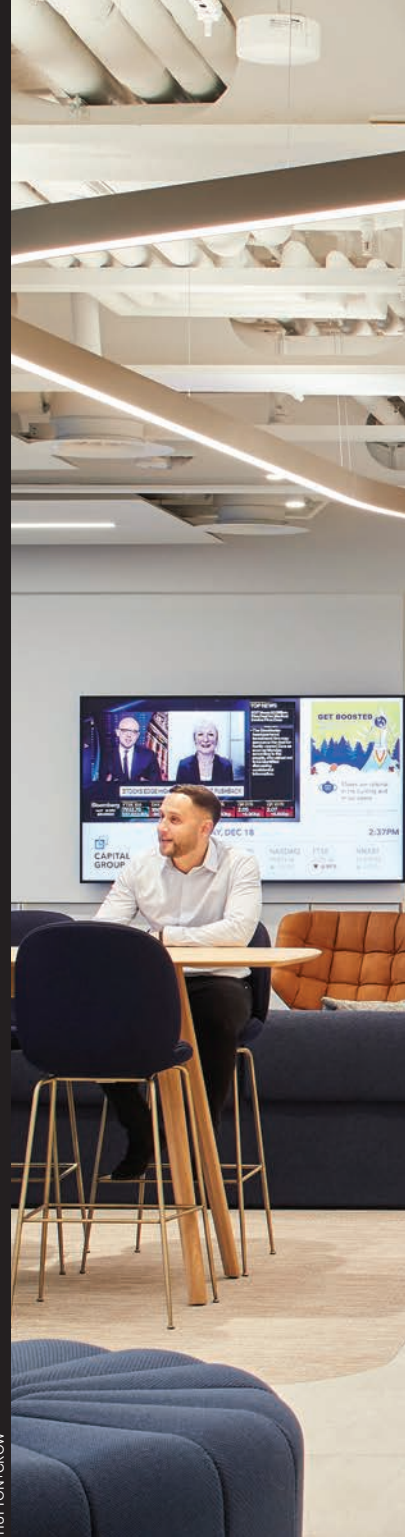
WINNER

Capital Group by tp bennett

Inspired by the rich history and dynamic movement of the Paddington Basin, tp bennett's design for Capital Group's new London headquarters showcases how design can reflect its local environment, blending form and function to create a purposeful workplace. The project prioritised sustainability, adopting a holistic approach focused on environmental, economic, and social principles. Designed across nine floors at 1 Paddington Square the new London HQ is progressive, emphasising connectivity and wellbeing for their associates. The design narrative focuses on the local environment drawing elements from Paddington's evolution into the design concept. Undulating forms that take inspiration from the reflections, fluid forms and ripples created by the Paddington Basin and surrounding waterways, are featured at intervals across the design.

The judges said...

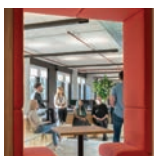
Great architectural elements



HUFTON+CROW

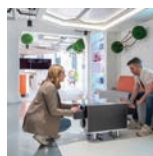
Sponsored by **NowyStyl** KUSCH+CO

FINALISTS & JUDGES' COMMENTS



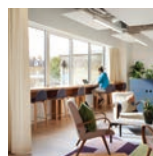
ROBIN QUERRELLE

Tide by AIS Interiors
Interesting use of data and AI to analyse social nodes and traffic paths. Love the engagement with their customers to source materials



ROBIN QUERRELLE

Stellar Entertainment by AIS Interiors
Sustainable design principles using daylight analysis to form the floor plan, sourcing eco-friendly materials



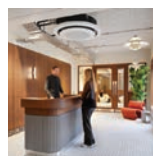
ROBIN QUERRELLE

Fivefields by Barr Gazetas
A warm, welcoming and modern workspace



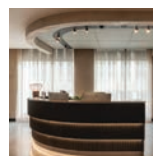
PHILIP VILE

30 Broadwick Street by Barr Gazetas
Impressive barrier-free connectivity across 9 floors, with a variety of agile and flexible working areas



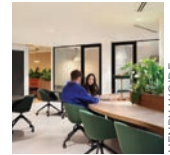
JACK HOBHOUSE

45 Whitfield Street by dMFK Architects
Strong thematic control and detailing



BILLY BOLTON

Project Maps by Ekho Studio
Excellent balance of restraint and richness



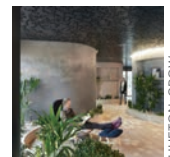
HENRY WOIDE

Kantar London by Woodalls
It's remarkable that designer repurposed over 50% of existing furniture and incorporated it into the overall design scheme



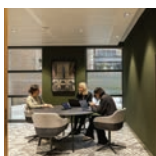
MIKE DINSDALE AND JOSH FRAY

Oliver Wyman by TSK Group
Strong use of sustainable materials and palette



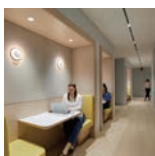
HUFTON+CROW

BP London by tp bennett
Imaginative use of colour and shape to create layouts of spaces and environments at a corporate scale.



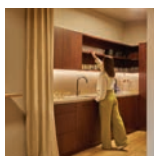
HANDOVER

IHG Hotels & Resorts Global HQ by HLW International
Gorgeous, human-centric spaces that exude warmth



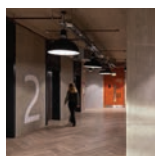
HUFTON+CROW

Global Insurance Firm by HLW International
The space is light and welcoming, it has corporate identity through its sophisticated, neutral palette



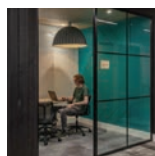
KASIA FISZER

Stride.VC by HOP
Simple use of limited palette of natural materials and light that creates calm and effortless spaces that support the wellness of the users



HUFTON+CROW, PALLADIAN MEDIA

Unity Place for Santander by LOM architecture and design
Bringing big business and the local community together in a post pandemic world



HUFTON+CROW, NICK WORLEY

Barn X for Microsoft by LOM architecture and design
Excellent fusion of rustic with modern cleanliness



NaughtOne UK by NaughtOne
A colourful and artistic feel to the workplace



PIP BASTAGE PHOTOGRAPHY

Eden, New Bailey by SpaceInvader
Successfully connecting the inside with the definitive outside narrative

2024 PRODUCT OF THE YEAR

WINNER

Tejo by Isomi

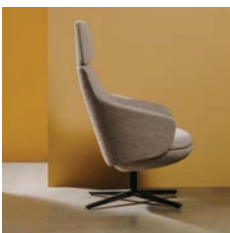
Flexible, sustainable, and all natural materials; Tejo is a recyclable modular sofa system which helps preserve Portugal's cork forests and marks a major step towards the circular economy. Made by recycling cork waste from the production of wine stoppers, its design combines soft contours, tactile surfaces, and clear aesthetics, resulting in a beautiful, practical and environmentally conscientious seating solution for contemporary interior settings. Each base and back module replaces plywood in its construction and is crafted solely from natural, renewable, and recyclable cork material. Led by the properties of the material and the production process, Tejo represents a bold new approach to sustainable furniture design and a commitment to low-carbon, zero-waste production cycle.

The judges said...

A beautiful and sustainable seating solution

SAM WALTON

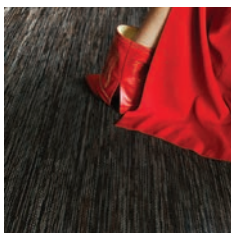
FINALISTS & JUDGES' COMMENTS



ANDREU WORLD

Calma Lounge by Andreu World

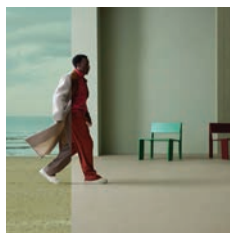
Exemplar of pioneering innovation with its synchronized reclining system



BOLON

The Grand Graphic by BOLON

A product that encapsulates sustainability, durability & design



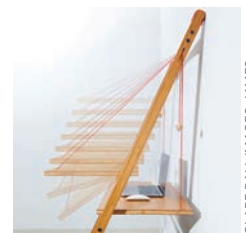
Marmoleum Solid by Forbo Flooring Systems

Climate positive, recyclable and plastic-free



Framery Smart Pod Family by Framery

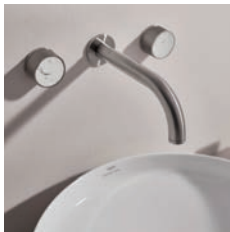
A contemporary design solution for the contemporary workplace



CLARE BALL IMAGES, JAMES LAWLEY STUDIO

Leandesk by Leandesk

Great design for a dynamic user



GROHE SPA Atrio Private Collection by Lixil Global Design
Unique and luxurious



Barricane by Morgan
Beautiful design, a nod to nostalgia with a modern twist



Morse Table System by NaughtOne
An innovative solution



Symphony Pocket Doors by Symphony
A neat solution to compact living



Tree of Knowledge by Walls of Eden
An attractive way of introducing biophilia into interior spaces

MANPREET SINGH PHOTOGRAPHY

UK PROJECT OF THE YEAR

WINNER

Barn X for Microsoft by LOM architecture and design

Barn X is a highly sustainable, net zero carbon workplace in the English countryside, with architecture and interiors by LOM architecture and design. Created for Rare Games, a Microsoft Xbox Game Studio, Barn X is a creative space designed to bring people together in a friendly, open working environment. The practice's design is conceived as a contemporary barn, using a timber frame structure for support and solar shading, to create a building that is both modern and rooted in its environment.

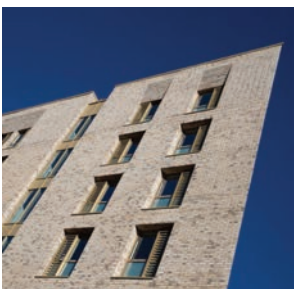
The judges said...

Great use of renewable materials with sustainability at the heart of the project

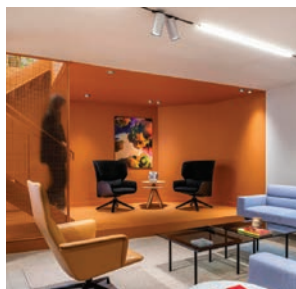
Sponsored by  SketchUp

HUFTON+CROW, NICK WORLEY

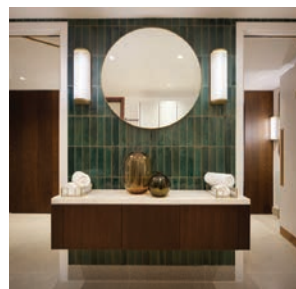
FINALISTS & JUDGES' COMMENTS



Morriss House, Nottingham by Aliva UK
Impressive reduced waste and energy consumption



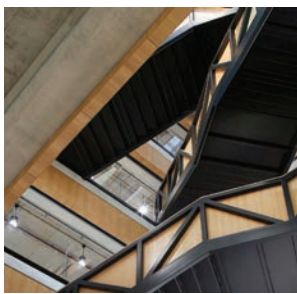
Andreu World London Showroom by Andreu World
This design celebrates the frequent scene set changes showrooms demand and makes the cut in sustainable, and reusable products



Twenty Berkeley Square by Barr Gazetas
Great reimagining of heritage, which results in a timeless heritage



Silestone XM by Cosentino
Smooth and contemporary



HUFTON+CROW, PALLADIAN MEDIA

Unity Place for Santander by LOM architecture and design
A development that goes far past the workplace brief, and starts to create community



Safari Lodges at West Midlands Safari Park by Newman Gauge
A tactile warm environment



PHILIP VILE

Cadent Antsy by Resonate Interiors
Sustainability is at the centre of this colourful project

GLOBAL PROJECT

WINNER

KINI Beauty Salon by JST Architecture

Standing in front of this two-story building and you may be surprised with what lays beyond its smooth and straight walls. Step inside and experience a visual sensation of ripples across a water's surface, or a blowing curtain, thanks to a very cleverly executed wavy curved wall. The result is a striking visual effect not typically seen in a beauty salon, but more akin to a well-designed art venue.

The judges said...

Stunning use of clean lines to reflect true organic architecture

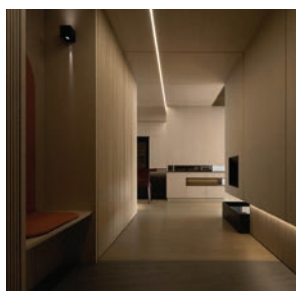
Sponsored by  Universal Fibers

ANDREAS LEE

FINALISTS & JUDGES' COMMENTS



Fivefields by Barr Gazetas
A friendly and modern take on workplace in a human environment



ON THE AB SIDE OF URBAN LIVING by Grandor Design
Very striking pared back design with beautiful use of materials

HAN MO VISION



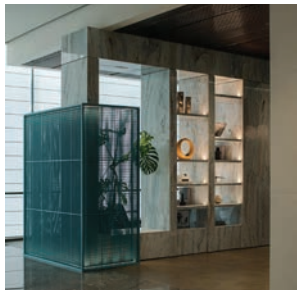
Te Mātāwai by Maynard
Interesting cultural design solution with a crafted element

DAVID ST GEORGE



Sir Howard Morrison Centre by Maynard
Simple, fresh and intuitive wayfinding picking up on cultural context

DAVID ST GEORGE



HE CHUAN

Shenzhen Shenye Century Valley Garden Phase II No 3. Club by PSquared.
Refined classical elegance



HUFTON + CROW

Capital Group by tp bennett
A clear organic flow to the space provoking productivity & wellbeing



TING WANG

Domus by W. Design
The combination of the architecture design with use of lighting creates depth & drama to this beautiful space

PRODUCT DESIGNER OF THE YEAR

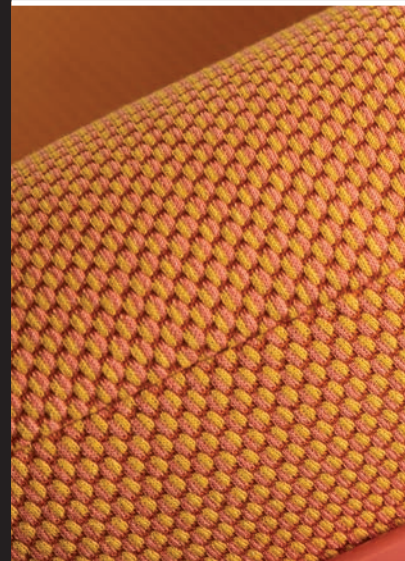
WINNER

Deadgood

Deadgood, a British design brand, has been shaping the industry for nearly two decades, crafting products with personality for global brands and cutting-edge commercial interiors. Founded by university friends Dan Ziglam and Elliot Brook, who had no prior business experience, the brand has become synonymous with bold, innovative designs and a deep commitment to sustainability.

Motivated by a lack of opportunities for young designers, Ziglam and Brook built Deadgood with a collaborative spirit, creating a platform to foster and promote the next generation of British talent. Today, that mission thrives under the direction of Vicki Leach, who began as an intern and now leads the design and development of many iconic products as the design director. The brand has partnered with notable designers such as David Irwin, SmithMatthias, Magnus Long & Gala Wright, John Tree among others, continuously providing space for emerging creatives to bring their ideas to life.

Known for their bold creativity and willingness to take risks, Deadgood's unique culture enables them to stand out in a fiercely competitive market. This commitment to innovation and disruption has positioned them as leaders rather than followers in the design industry. As they continue to ride the wave of success, Deadgood remains steadfast in their dedication to originality, quality and sustainability—values that have defined them from day one.





INTERIOR DESIGN PRACTICE 2024

WINNER

Hawkins\Brown

Hawkins\Brown is an internationally renowned practice of architects, interior designers, and researchers, with studios in London, Manchester, Edinburgh, Dublin, and Toronto. The practice brings a collaborative approach to projects across a range of types and scales in six main sectors: civic, community & culture, education, workplace, transport & infrastructure, healthcare, and residential.

The Interior Design team, led by Morag Morrison, brings empathy to people and their work across all sectors. Whether it's from the experience of an individual using a building, or the long-term impact on a community, the practice work by creating identity, introducing new ways of working, creating a rich mix of uses, and making the most of existing buildings.

A diverse portfolio is just one area which sets Hawkins\Brown apart; from old libraries and new schools to lab-enabled offices, listed town halls and underground stations. Others are the liberal use of colour in all their projects and the ongoing promotion of artist collaborations.

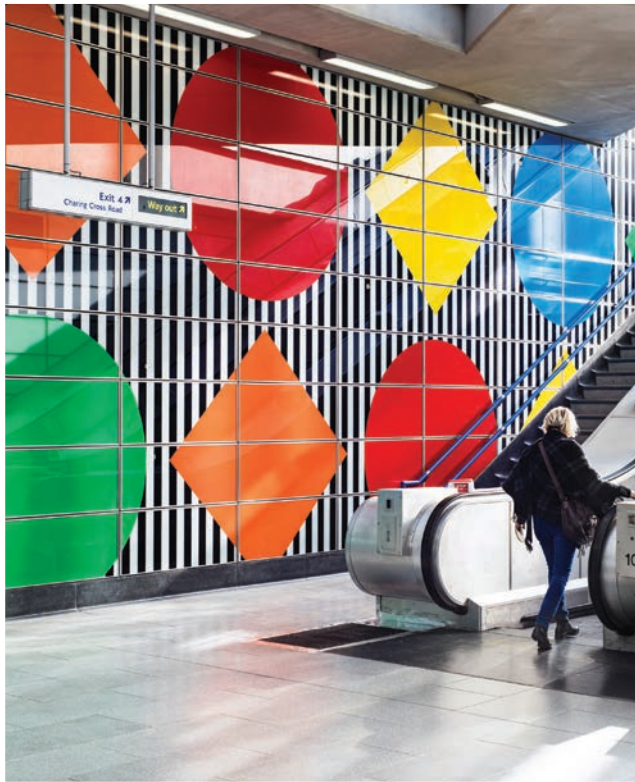
Nowhere demonstrates this better than the practice's new London HQ, the former Vitra showroom on Clerkenwell Road, that has been transformed into an exemplar of smarter ways of working creatively, healthily and sustainably, and comes complete with artist's hut by Richard Woods, stunning multi-coloured graphics by architect June Tong across 850 sq. ft of shop window, and an ox-blood feature staircase.



TIM CROCKER



RUTH WARD

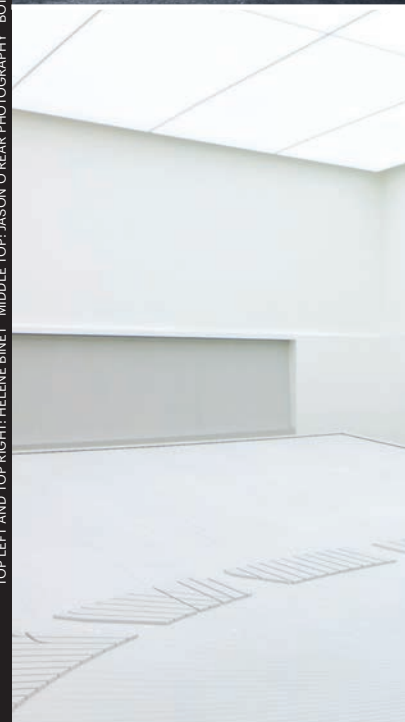


OUTSTANDING CONTRIBUTION TO DESIGN

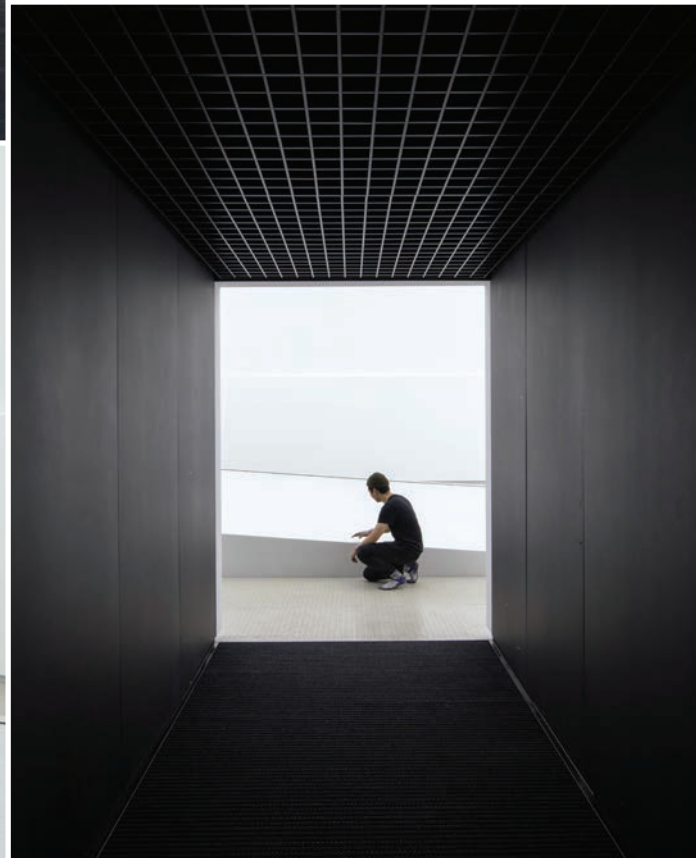
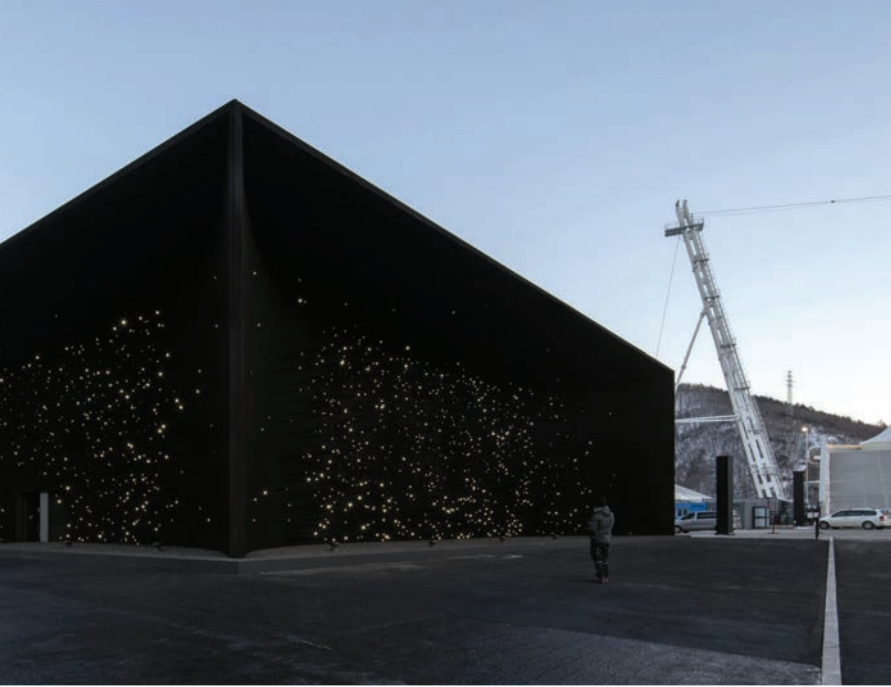
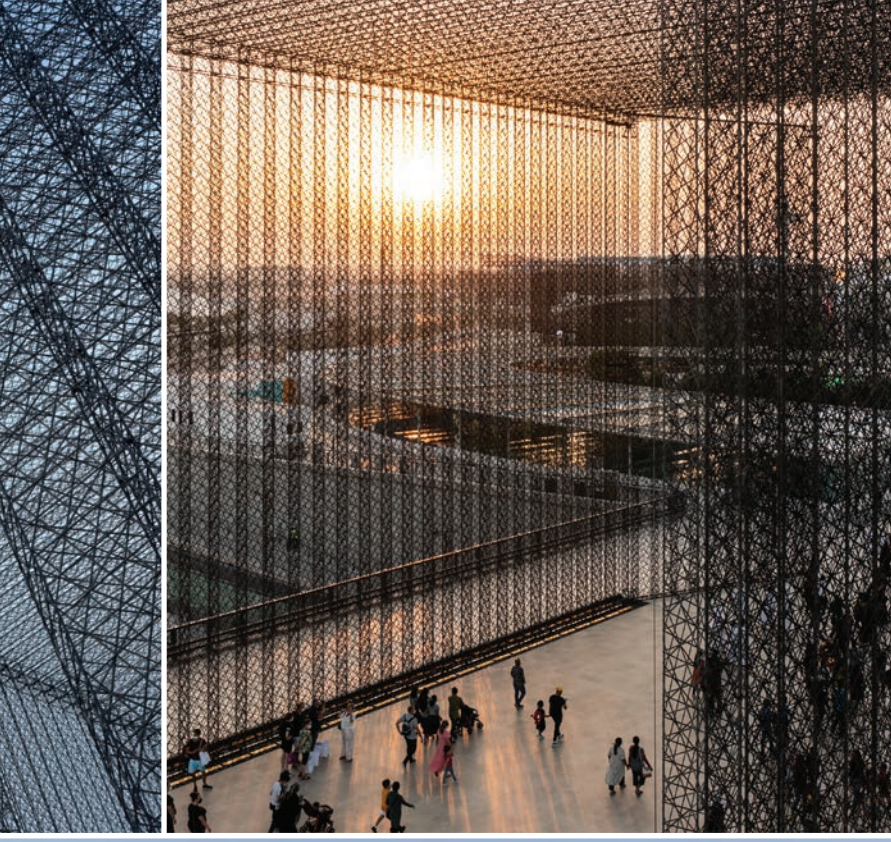
WINNER

Asif Khan

Asif Khan's multi-disciplinary practice whose work spans the design of buildings, landscapes, installations, exhibitions and objects often alongside film, music or new technologies. His interests are in sensory experience, craftsmanship, cultural exchange and the merging of history with future worlds. His projects explore sites of complex narratives, community empowerment and questions of identity. A former recipient of the FX Breakthrough Talent Award in 2011, Khan's talent, creativity and dedication continues to be recognised with accolades such as awarded an MBE for Services to Architecture in 2017 and currently serves as Vice Chairman of the Design Museum in London. Current projects include the Barbican Art Centre Renewal, the New London Museum, the Museum of the Incense Road in Al-Ula, Tselinny Centre for Contemporary Culture in Almaty, and 'Cartier' at the V&A in 2025. He has collaborated with musicians and artists such as Brian Eno, Theaster Gates, Mark Ronson and scientists such as Dr. Catherine Heymans. Khan's works have been exhibited at Sharjah Architecture Triennale, V&A Dundee, MAAT Lisbon, Royal Academy of Arts, Milan Salone, Milan Triennale, London Design Week, Tokyo Design Week. He will participate as an artist in the Islamic Art Biennale in Jeddah, 2025.



TOP LEFT AND TOP RIGHT: HELENE BINET MIDDLE TOP: JASON O'NEAR PHOTOGRAPHY BOTTOM LEFT AND RIGHT: LUKE HAYES



EXTRAORDINARY AND OUTSTANDING LIFETIME ACHIEVEMENT TO DESIGN AND ARCHITECTURE

WINNER

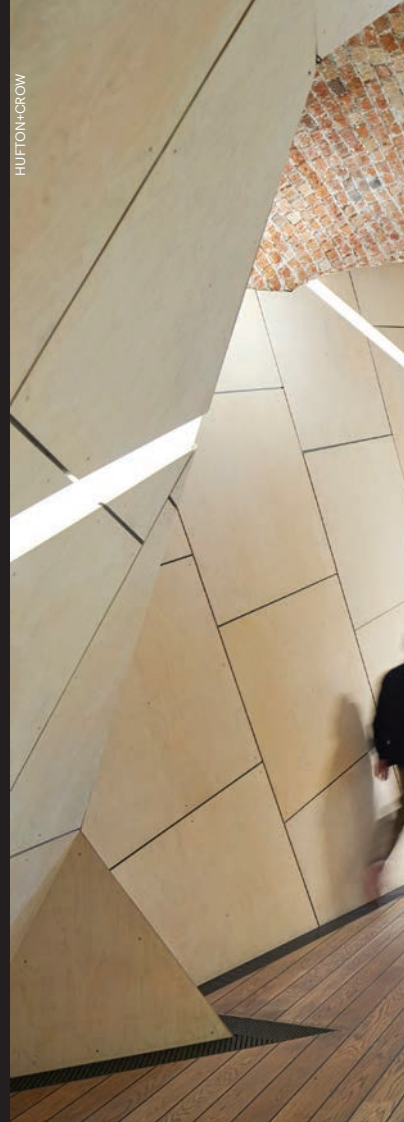
Daniel Libeskind

Polish-American architect, Daniel Libeskind is an international figure in architecture and urban design. Informed by a deep commitment to music, philosophy, and literature, Libeskind aims to create architecture that is resonant, original, and sustainable.

Libeskind established his architectural studio in Berlin, Germany, in 1989 after winning the competition to build the Jewish Museum in Berlin. In February 2003, Studio Libeskind moved its headquarters from Berlin to New York City to oversee the master plan for the World Trade Center redevelopment, which is being realised in Lower Manhattan today.

Libeskind's practice is involved in designing and realising a diverse array of urban, cultural and commercial projects around the globe. The Studio has completed buildings that range from museums and concert halls to convention centres, university buildings, hotels, shopping centres and residential towers. As principal design architect for Studio Libeskind, he speaks widely on the art of architecture in universities and professional summits. His architecture and ideas have been the subject of many articles and exhibitions, influencing the field of architecture and the development of cities and culture.

Libeskind has won notable awards for his work including the Goethe Medal, the Hiroshima Peace Prize, the Dresden Peace Prize, and the European Union Prize for Civil Rights.



HUFTON+GROW

HUFTON+GROW

DOUBLESPACE



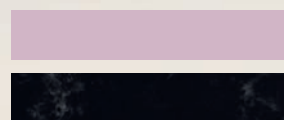
HIMACS

The shape of your ideas

The ideal material for the greatest designs



HIMACS
is proud to
be the official
Sponsor of the
FX International
Design Awards



The trophies are made of HIMACS
Ruby and Aurora Midnight

HIMACS allows you to play with light, touch and shape and to design whatever comes to mind. Warranty up to 15 years.
#The shape of your ideas



Information and samples can be obtained from: Alex Gray
Phone: +44 (0) 1732 897820 | email: himacseu@lxhausys.com

www.lxhausys.com/uk

 LX Hausys

BOUNDED by *Karim*

www.nowystyl.com

www.kusch.com

Visit our showroom: 58 St John's Square,
London EC1V 4JG, T: +44 (0) 20 3089 8369



design by Karim Rashid

NowyStyl KUSCH+CO




Radii is proud to sponsor the FX Awards 2024.
Best of luck to all the shortlisted candidates,
and congratulations to the winners!



With over 33 million users, Trimble SketchUp is the premier design software among creative professionals.



 **SketchUp**
A Trimble Product

design beyond.



Universal
Fibers

The best **blueprints** for brilliant design begin with sustainable specification. At Universal Fibers we've been at the forefront of responsible innovation for years, demonstrating that beautiful, high-performance interior solutions can be achieved sustainably. Our **Thrive[®] matter** fibre is proof of just that. Boasting the industry's lowest carbon footprint and 90% total recycled content. Design beyond with impactful solutions by Universal Fibers[®]

universalfibers.com

PROUD SPONSORS OF THE 2024 FX AWARDS
Good luck to those who were shortlisted!



follow us: @universalfibers

Find it, fund it, design it, build it,
engineer it, develop it, reuse it,
reconfigure it, cost it, manage it,
light it, furnish it, refinish it, flex it,
tech it, electrify it, populate it,
enliven it, sell it, repurpose it,
refurbish it, recycle it.

PR it!

We tell every bit of your story to the right people.

informare

PR • BRANDING • CONTENT • COMMUNICATIONS

T: +44 (0)20 3475 1735 @informare_uk www.informare.co.uk

LONDON • NEW YORK • DUBAI • NETHERLANDS • HONG KONG • AUSTRALIA

MillerKnoll

Doing our part for a better world



The materials we choose affect the sustainability of a design more than anything else. That's why by 2030, all products across our collective of brands will contain at least 50 percent recycled content. Products like the Sayl Chair from Herman Miller are leading the way.

Follow our progress at millerknoll.com/sustainability

Changing the way you think about workplace.



Kao, London



Maxis 1, Bracknell



Woolyard by GPE, London

Proud sponsors of the FX Awards 2024

Good luck to the 100+ shortlisted projects!

morganlovell.com



Save the date

26
November
2025

fxdesignawards.co.uk
designcurial.com

THANK YOU FOR JOINING US TONIGHT

HI·MACS

informare
PR • BRANDING • CONTENT • COMMUNICATIONS

MillerKnoll

Morgan Lovell

NowyStyl KUSCH+CO

RADII.

 SketchUp

 Universal
Fibers

The FX International Interior Design Awards is produced by Business Trade Media International, the publisher of FX

Business Trade Media International
John Carpenter House
Carmelite Street
London EC4Y 0AN

FX

design/
curial