

FX AWARDS 2021: JUDGES

The judging system

The FX International Interior Design Awards is open to architects, designers, clients and suppliers for interior design projects or products completed or launched between June 2018 and July 2021. The judges are independent experts who are recruited to form a fresh new panel each year, and comprise engineers, clients, architects and designers from many different sectors to reflect our audience. They were invited onto the 2021 panel because of their experience, opinions and commitment to design. Judges, and their companies, are not permitted to enter any categories.

Each category is judged by a different set of judges, so if you do not win in one category you could win in another. Because of the large number of entries, and to preserve the integrity of the FX Awards, we use a transparent system in which each judge ranks their top six entries in each category before they know who their co-judges are. With up to 10 judges for each of the hotly contested categories, these placings are then scored and added together to confirm the shortlist and the ultimate winner.

Many thanks to all our judges, who gave up so much of their valuable time and brought their expertise and enthusiasm to the process. Sincere thanks also to Cherrill Scheer, who will act in an advisory capacity as unofficial chair of the judges.



Andrew Barraclough
Vice president of design,
GlaxoSmithKline

Andrew Barraclough has been at GSK for over ten years and has set up design teams across the globe. He has 30 years' experience working across all aspects of design and innovation across many FMCG sectors, most recently in wellness and healthcare. gsk.com/en-gb/home/



Annelie Kvick Thompson
Partner, Grimshaw

A highly skilled member of Grimshaw's international design team, Annelie's role involves the direction and leadership of large and complex projects often incorporating transport with mixed-use regeneration. grimshaw.global



Beverley Bayes
Creative director, Sparcstudio Design

Sparcstudio are award winning spa, wellness & hotel designers, based by the Thames in London. The team has a reputation for delivering superlative atmospheric and theatrical spaces with real warmth, light and 'heart and soul'. sparcstudio.co.uk



Carlos Virgile
Design & branding consultant

Having found in 1990 design agency Virgile + Partners, Carlos Virgile has worked for many global luxury retail and hospitality brands and is now as an independent consultant on design and branding. virgileandpartners.com



Catherine van der Heide
Associate, interior design, Hassell Studio

Catherine is a workplace specialist and a leading light in delivering award-winning, complex, agile projects. As a designer at Hassell, Catherine has worked in the UK, Australia and Asia and thrives in the process of creating great workplace experiences. hassellstudio.com



Charlotte Harris
Co-creative director, Harris Bugg Studio

Harris Bugg Studio is an energetic, multi-award-winning landscape design practice with a range of residential, public, commercial, botanic and show gardens across the UK and Europe. harrisbugg.com



Cressida Toon
Partner, Sonnemann Toon Architects

Cressida Toon is a founding partner of Sonnemann Toon Architects and a champion for design quality, particularly in the healthcare sector. st-arch.co.uk



Elena Kella
Director, Manea Kella

Manea Kella's projects are international and the practice operates across hospitality, residential and service industries. The studio is driven to deliver the highest standards of architecture. Elena's ambition is to maintain a similarly rigorous attention to detail regardless of the project scale. manekella.com



Georgia Burt
Creative director + founder, design studio, Georgia Burt Architecture

Georgia is an award-winning architect and specialist healthcare interior designer with over 24 years of experience. In 2020 she established her own design studio where she continues to follow her passion for designing buildings that positively impact wellbeing within the healing environment. georgiaburtarchitect.com



Hannah Chalmers-Stevens
Associate director, Barr Gazetas

Barr Gazetas is an award-winning architecture practice in London with experience in a variety of sectors. Hannah joined the team in 2007 and became an associate director in 2019. She has notable interiors experience and is currently leading the fit-out sector for Barr Gazetas. barrgazetas.com



James Owen Webster
Director, Alexander Owen Architecture

As an award-winning design studio and creative agency AO has a simple passion – to enhance everyday experience by design. aoarchitecture.co.uk



Jane Lawrence
Head of interiors, Knight Dragon Developments Ltd.

Jane is currently head of interiors for Knight Dragon Developments Ltd. Prior to this she was a director at The Manser Practice and Conran & Partners, heading up projects in the residential, hospitality and museums sectors. knightdragon.com | greenwichpeninsula.co.uk



Jill Entwistle
Executive editor, lighting, (Illumination in Architecture)

Jill Entwistle is the executive editor of Lighting (Illumination in Architecture). She is the author of three books on lighting, including Detail in Contemporary Lighting Design (Laurence King), and the editor of the first BCO (British Council for Offices) Guide to Lighting.



Jon Tollit
Architect, Jon Tollit Architects

Wide experience in project types, size and location with a focus on how new design processes can unlock opportunity.



Julie Gaulter
Associate, Feilden Clegg Bradley Studios

Julie works across all sectors at FCBstudios. Our practice promotes a collaborative approach to all projects and has an international reputation for design quality for pioneering environmental expertise. fcbstudios.com



Levent Çağlar
Chief ergonomist, FIRA International

Levent Çağlar is the key UK expert in the design evaluation of furniture. He works with designers, architects and specifiers to create efficient work environments for the wellbeing of people. fira.co.uk



Luis F. Rueda
Director, LFR Design Studio

We help brands to bring experiences and ideas to life in spaces that promote human interaction and activity at brand environments, retail, and the workplace. From strategy to architectural design, our work embodies the collaboration with our clients to arrive at spaces that inform and delight as they capture a brand's essence. lfrueda.com



Maria Cheung
Director and head of interior design, Squire and Partners

Maria Cheung is a director and head of interior design at award winning architecture and design practice Squire and Partners. squireandpartners.com



Nick Searl
Joint managing partner, Argent LLP

Nick Searl is managing partner for Argent the developer's behind King's Cross and partner of Argent Related, the company that is delivering Brent Cross Town and the regeneration of Tottenham Hale. argentrelated.co.uk/ argentllp.co.uk



Paul Traynor
Principal director, Light Bureau UK

Paul loves, lives, breathes and occasionally teaches lighting design. Strategy-led, purpose and joy are mantras in his and Light Bureau's design approach. lightbureau.com



Peter Karn
Creative director, MET Studio

As global creative director of experiential design agency MET Studio, Peter creates highly innovative, interactive and immersive projects that connect audiences with stories. metstudiodesign.com



Richard Alexander Bridges
Director, Alexander Owen Architecture

As an award-winning design studio and creative agency AO has a simple passion – to enhance everyday experience by design. aoarchitecture.co.uk



Richard Parr
Founder, Richard Parr Associates

Richard Parr Associates is a leading architecture practice specialising in the reinvention and creation of luxury, often historically significant, residential and hospitality buildings both in the country and in the city. The practice believes that sustainability, longevity and locality are all important elements in the creation of the ultimate family home. richardparr.com



Roxanne Quesnel
Director, Turner & Townsend

Roxanne is the occupier sector lead for Turner & Townsend, a global programme, project and cost management consultancy making the difference for our clients in real estate. turnerandtowntsend.com



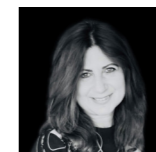
Shane Kelly
Principal Director, tp bennett

Shane is expert at translating client aspirations and business objectives into inspiring interior concepts, from boutique hospitality projects to international headquarters. tpbennett.com



Simon Jackson
EMEA interior design practice leader, AECOM

Simon is a respected and award-winning interior designer who champions best practice in design. He has over 25 years of professional experience in the interior design industry and is passionate about how design improves productivity and encourages creativity in workplace, hospitality and retail environments. aecom.com



Smaro Kirmelidou
Senior project architect, SHH

Smaro is an esteemed member of the commercial team of award-winning architecture and interior design practice SHH. The practice is vastly experienced at working globally across sectors – residential, hospitality and commercial, and across disciplines – architecture, interior design and FF&E. shh.co.uk



William Poole-Wilson
Managing director, Will + Partners

Will + Partners specialise in workplace design and consultancy. Founded by William Poole-Wilson, the studio is recognised for its progressive research on wellness and the impact it has on people, wellbeing and workplace performance. willandpartners.com